



# **SELF STUDY REPORT**

**FOR**

**1<sup>st</sup> CYCLE OF ACCREDITATION**

**HUKUM SINGH BORA GOVERNMENT POST  
GRADUATE COLLEGE, SOMESHWAR**

**GOVERNMENT POST GRADUATE COLLEGE, SOMESHWAR  
263637**

**[www.hsbgdcsomeshwar.ac.in](http://www.hsbgdcsomeshwar.ac.in)**

**Submitted To**

**NATIONAL ASSESSMENT AND ACCREDITATION COUNCIL**

**BANGALORE**

**March 2023**

# **1. EXECUTIVE SUMMARY**

---

## **1.1 INTRODUCTION**

Hukum Singh Bora Government Postgraduate College Someshwar is a prestigious higher learning institution, which is one of the constituent colleges of Soban Sing Jeena University, Almora. The college was established in 2006.

In the serene Someshwar valley, college is surrounded by picturesque small villages and profuse flora. The area is regarded sacred and is located on the banks of the Kosi and Sai rivers.

The college serves higher education needs of the neighbouring rural communities. This esteemed institution is committed to both teaching and research. More than 500 students obtain education from its highly skilled academics at the undergraduate and post-graduate levels in the fields of Science, Commerce, and the Arts.

The college continually exhibits exceptional success in its academic, athletic, and extracurricular activities.

The college has developed an outstanding infrastructure throughout the years. There is a well-stocked library, well equipped computer lab and science laboratories, furnished conference hall, and an up-to-date smart classroom at the campus.

A sizable sports field and an indoor sports arena are among its sporting amenities.

The campus is surrounded by lush greenery and serene environment. College relentlessly strives to give students access to a wealth of knowledge and opportunities for all-round development.



## **Vision**

Hukum Singh Bora Government Post Graduate College Someswar is driven to provide affordable quality education, encourage multidisciplinary learning, while equipping students with knowledge and skills in their chosen stream, inculcate values, train them to be efficient, empathetic and socially responsible individuals, focus on holistic development and promotion of lifelong learning, provide opportunities for students to realize their full potential and thus empower them to meet and exceed challenges as active participants in shaping the future of our world and above all shape them into good human beings.

## **Mission**

- To be a student centric institute imbibing experimental, innovative and lifelong learning skills.
- To create a democratic academic atmosphere.
- To offer courses to the students for enhancing professionalism, humanism and social responsibility through quality education.
- To inculcate values of discipline, hard-work, team-spirit, scientific tempers and to develop critical thinkers.
- Endeavor to stretch the intellectual and creative capacity of the young and energetic minds.
- To provide life skills for a successful career, home and society.
- To provide equal opportunities to every section of society.

## **1.2 Strength, Weakness, Opportunity and Challenges(SWOC)**

### **Institutional Strength**

Lush green campus with full of biodiversity.

Good female student ratio in comparasion to male students.

Well qualified faculty in which more than 80 percentage are PhD.

Library of the college is digitalized.

Affordable education for all group of students.

Government scholarship schemes for the SC/ST students and girls.

Wifi facility for all students to inline themselves with the technology.

### **Institutional Weakness**

Need to expand infrastructure inline up of PG level.

Need to increase student strength in B.Sc courses.

Need to register students in value added courses which are already offered by the institution.

Need to initiate exchange programmes and collaborations with other universities and institutions both at the national and international level.

Unavailability of proper transport facilities for college students.

Registration of Alumni Body.

### **Institutional Opportunity**

To expedite approval and introduction of new courses.

To sign MOUs with national and international organisations for student and teacher exchange programmes, research, and employment opportunities.

To start new 3 undergraduate courses which are already approved by the Government.

Sufficient available land to construct new buildings and hostel.

Wide opportunities are waiting to the students to attend competitive examinations.

Steps can be initiated to establish solar energy system.

### **Institutional Challenge**

To expedite approval and introduction of new courses at PG level.

It is difficult to cater 70% students with average range of attendance in the college.

Being a government –college, it is difficult to find non-government funds to meet expenditure on infrastructural maintenance.

It is difficult to raise funds for conducting the seminars and faculty development programmes by the departments.

## **1.3 CRITERIA WISE SUMMARY**

### **Curricular Aspects**

Hukum Singh Bora Government Post Graduate College, Someshwar has a range of courses graduates i.e. B.A., B. Com, B.Sc. (PCM and ZBC), and postgraduate course M.A. (Hindi, History and English).

To make the curriculum employment oriented, Diploma in Yoga and Certificate in Computer Application have also been introduced in college in 2021.

**Two new programmes** B.Sc. (Physics, Chemistry, Mathematics) and B.Sc. (Zoology, Botany, Chemistry) were introduced during the assessment period, catering to local, regional, national, and global needs of the society.

**Programme Outcomes, Programme Specific Outcomes and Course Outcomes** were defined for all programmes and the attainment is being assessed at department level, the same are also uploaded in institutional website.

The curriculum integrates cross-cutting issues of **gender, environment, human values and professional ethics** through courses at undergraduate and postgraduate level.

Nearly **7%** of the students completed **field work** which includes cross-cutting issues and features needed for skill development and employability.

**College follows the academic calendar** as provided by university, including scheduling of examinations and curricular and co-curricular events are systematically done and monitored through review meetings.

**Feedback** on Syllabus from **Students, Faculty and Alumni** are collected online as well as offline mode and its

analysis played a crucial role in suggestion sent to affiliating university for curriculum revision.

### **Teaching-learning and Evaluation**

Hukum Singh Bora Government Post Graduate College, Someshwar follows student-centric teaching-learning pedagogy.

The admission process is **online** through Affiliating University Portal which reflects transparent and unbiased procedure in line with the norms of the Affiliating university and state government.

During the assessment period, average **Enrolment Percentage** is nearly **61%**.

On average **44%** seats are filled against reserved seats for SC/ST and OBC candidates as per applicable reservation policy.

During Assessment period, **Teacher-Student Ratio** is nearly 1:31.

Student Induction Programme is organized for the freshers. It enables a smooth transition from school to college environment and helps them familiarize with the ethos of the college.

**Student-centric** learning methods such as experiential learning, participative learning, problem-solving methods, ICT-enabled learning and traditional learning methods are adopted.

**91.75%** of teachers have been worked against **sanctioned post** during assessment period.

Teachers use **ICT tools, prepare e-Content and facilitate** multi-modal learning.

**100%** of the faculties are PhD / NET/ SLET during assessment period.

Faculty members are encouraged to enrol into Faculty Induction Programmes, faculty development programmes are conducted for all teachers to enhance the quality of teaching-learning-evaluation process.

IT Integration in **Internal Evaluation** system has been comprehended through online Question Banking, online Quiz, Internal Mark list processing and Publication of Results.

A student is not satisfying with his/her internal evaluation may directly contact to concern teacher, if still he does not get satisfies, he need to give an application to the principal and principal may ask the teacher for justification.

A student not satisfies with his/her assessment has to give an application along with marksheet to the examination in-charge of college. The same application with covering letter by principal is forwarded to the controller of examination of the affiliated university. University authority take necessary action on that. A student can demand copy of his/her evaluated answer scripts under h RTI Act, 2005 from university which is a time bound process.

Students are familiarized with Outcome-Based Education, right from Student Induction Programmes and subsequently through interaction by course teachers.

**Attainment of Course Outcomes** are assessed both **directly and indirectly**. Attainment reports are analysed and necessary actions are taken consequently, to strengthen the advantages of outcome-based education.

The **Average Pass Percentage** during the assessment period is **85.05%** and for the latest completed academic year is **93 %**.

### **Research, Innovations and Extension**

The College has moving ahead to strengthen its research capacity and increased the research output substantially during the last five years.

Through IQAC initiative, webinar series is conducted by faculty members including seminars on Research Methodology and Intellectual Property Rights (IPR).

During assessment period, more than 35 number of research papers are published by faculty members and more than 10 number of book chapters are written in reputed books.

Exchange programme under EK BHARAT SHRESHTH BHARAT was held in college. During lockdown due to spread of global pandemic college remained closed but various online webinars and lectures on research topics were conducted.

**Received many awards** for extension and outreach activities from NGO's and local Government system for conducting **more than 50 extension** activities through departments, NSS and Clubs for sensitising students and social upliftment. More than **70% of the students** participate in Extension Activities.

College has an MOU with Utrakhand Open University (UOU), and as per this MoU college is serving as study and examination centre of UOU.

### **Infrastructure and Learning Resources**

Hukum Singh Bora Government Post Graduate College, Someshwar has developed adequate physical facilities to support teaching – learning process in the institution.

The physical facility comprises of the following 3.94 Acres of Campus area having three Academic Blocks and a Sports Complex with total built-up area of 895 SqM.

Two smart classrooms, 1 Auditoriums, one open Auditorium and Library accommodating 50 persons simultaneously equipped with RFID gates.

More than 05 lakhs spent on Library Resources and more than 5300 books added during the assessment period.

### **Laboratories**

1 Computer Lab

1 Physics lab

1 Chemistry Lab

1 Zoology/ Botany Lab

1 Geography lab

### **Computing equipment and facilities:**

One Servers and 31 Computers with a Student-Computer ratio 1:19 (average 1 computer for nineteen students)  
Licensed, Firewall Security for Networks

Fully Wi-Fi enabled with three optical fibre connections, two of (200 MBPS) and one of (150 MBPS)

### **Sports and Games Facilities**

Open Stadium, Football court, Volleyball court, a multipurpose Indoor Stadium, badminton court and a Fitness Centre, Yoga Practice spaces for girls.

### **Other Facilities**

Separate rooms for Administrative Office, Examination cell, NSS Office, Sport Store room, Girls common rooms, Separate Wash rooms for girls and boys, separate department rooms.

### **Expenditure during assessment period, excluding salary**

**Rs 83.39 lakhs** for **infrastructure augmentation**

**Rs 7.24 lakhs** for **maintenance** of physical facilities and academic support facilities

### **Student Support and Progression**

Hukum Singh Bora Government Post Graduate College, Someshwar puts the students as the top priority and has a **well-defined mechanism** for **Student Support and Progression**.

**Several Cells/Committees**, comprising teachers and student representatives monitored by the principal, are effectively functioning to ensure the **academic, psychological, physical, economic, social and spiritual welfare** and **development** of students.

College has established Policy and Procedures to help students to avail Scholarships and Freeships.

**27%** of Students have benefited from **Scholarships and Freeships** offered by the Government during the assessment period.

To facilitate **Capacity Development** and **Skill Enhancement**, various programmes based on Soft skills, Language and communication skills, Life Skills, and Technology were organized.

**58%** of Students benefited by **Career Counselling** and guidance for Competitive Examinations offered by the



institution

**2** Students qualified National level Competitive Exams **NET** during the assessment period

Effective **Grievance Redressal Mechanism** is in place to ensure timely redressal of Student Grievances including **sexual and ragging** instances.

No cases of **ragging/sexual harassment** reported during the assessment period

More than **150** Students got admission for **Higher Studies** in various institutions during the assessment period

The college has a vibrant **Students Union**, of **elected representatives**, commended with substantial responsibilities.

Students Union is actively involved in conducting **Cultural Festival, Sports Meet, College Day, Blood Donation Camps, Important national/ international days** and coordinates participation in cultural and sports activities at State, National and International Level.

**8** Students Awarded for outstanding performance in Sports/Cultural activities at International/ National/ State Level during the assessment period.

Students play a significant role in academic and administrative bodies. Students wing of IQAC has been effective Student Life at College has been dynamic with more than 30 sports/cultural events organized in the campus.

**Alumni of College** is active and contributes significantly to the development of the institution through financial and non-financial means.

### **Governance, Leadership and Management**

The governance of the college is aligned with the **vision and mission** of the institution. The College has a well-defined, decentralized and participatory organizational structure.

The College has articulated well-defined policies covering **Governance, Quality, Research, Code of Conduct, Environment, Divyangjan, Gender, Maintenance** etc.

**Well-structured organogram** is instrumental in the smooth recognition of the institutions' Vision and Mission to all stakeholders.

Implementation of **e-governance** in areas of **administration, Finance and Accounts, Student Admission and Support, Examination**, enhance good governance through transparency, participation and accountability

College looks into the **Welfare** Measures of staffs through **Statutory Welfare Schemes, Physical and Health Assistance, Awards and Acknowledgements, Career Enrichment Measures and Career Advancement Scheme**.

During the assessment period for the teaching and non-teaching staff **80%** attended online/face-to-face **FDP**,

### **Administrative training and Professional training.**

Accounts of College are subjected to internal, statutory and government audits regularly Major quality initiatives institutionalised by IQAC are Quality Audits like **Green Audit, Digitalization of Documentation, Feedback Mechanism, Initiatives for Introduction of OBE, DigiCampus Initiative, ICT integration into teaching-learning, Staff Empowerment Initiatives, Drive for e-Content Generation** and efforts of IQAC include **NIRF India Ranking participation**.

Financial Accounts of College are subjected to **internal, statutory and government audits** regularly.

### **Institutional Values and Best Practices**

The institution has been responsive and active to the evolving challenges and demanding issues such as gender equity, environmental consciousness and sustainability, inclusiveness and professional ethics. In pursuit of apprehending it, institution's vision and mission have been the foundational principles.

#### **Gender Equity**

Annual Gender Sensitization Action Plan, Women Cell ensure and promote Women Empowerment and of Gender Equity.

Number of programmes have been organized to sensitize and promote Gender Equity and facilitate Women Empowerment.

Counselling Centre supported by faculty members

#### **Environmental Consciousness & Sustainability**

**All Street lights** are lightened with solar energy.

**100% electric lights** are energy saving **LED lights** and power-efficient equipments are installed.

**Rain-water harvesting** with a capacity of **1 lakh Litres**, Water tanks and streamlined Water distribution systems are effectively maintained for Water conservation.

**Ban of single-use plastic, no entry of automobiles** for green campus initiatives.

**Green, Energy, and Environment Audit** conducted.

**Divyangjan-friendly and barrier-free environment**, Wheel chair assistance, Divyangjan-friendly Washrooms.

#### **Human Values & Professional Ethics**

More than **50 Activities** organized to sensitize students and employees toward constitutional obligations and duties.

**Prescribed code of conduct** and programmes to promote human values and professional ethics.

More than **20 Events** are organized yearly to mark days of national and international importance.

### **Bast Practices**

**Best Practice 1:** As technology is evolving, college has implemented uses of **QR codes**. Implementation of QR codes is evident from Library, grievance system, laboratory uses and manual, online support, admission process and for environment promotion.

**Best Practice 2:** College is making an effort toward **Environment Sustainability** with usage of technology. Protection of natural resources is on priority and trying to change habits of individuals so that people may have more concern towards environment.

### **Distinctiveness:**

College has presented its distinctiveness in the field of **woman empowerment** through Mahila utpedan Cell of college, where counselling of female students has been done in regular basis. .

College is dedicated to water conservation and proper utilization. The another distinctiveness of college is usage of water through **natural resources** only and excess water is supplied to other institutions.

## 2. PROFILE

### 2.1 BASIC INFORMATION

Name and Address of the College	
Name	HUKUM SINGH BORA GOVERNMENT POST GRADUATE COLLEGE, SOMESHWAR
Address	Government Post graduate College, Someshwar
City	Someshwar
State	Uttarakhand
Pin	263637
Website	<a href="http://www.hsbgdcsomeshwar.ac.in">www.hsbgdcsomeshwar.ac.in</a>

Contacts for Communication					
Designation	Name	Telephone with STD Code	Mobile	Fax	Email
Principal	Hema Prasad	05962-243258	7505623728	-	gdcsomeshwar@gmail.com
IQAC / CIQA coordinator	Rakesh Pandey	05962-243077	9456138619	-	iqac.gpgcs@gmail.com

Status of the Institution	
Institution Status	Government

Type of Institution	
By Gender	Co-education
By Shift	Regular

Recognized Minority institution	
If it is a recognized minority institution	No

Establishment Details	

State	University name	Document
Uttarakhand	Soban Singh Jeena University	<a href="#">View Document</a>

Details of UGC recognition		
Under Section	Date	View Document
2f of UGC	06-04-2018	<a href="#">View Document</a>
12B of UGC		

Details of recognition/approval by stationary/regulatory bodies like AICTE,NCTE,MCI,DCI,PCI,RCI etc(other than UGC)				
Statutory Regulatory Authority	Recognition/Approval details Institution/Department programme	Day,Month and year(dd-mm-yyyy)	Validity in months	Remarks
No contents				

Recognitions	
Is the College recognized by UGC as a College with Potential for Excellence(CPE)?	No
Is the College recognized for its performance by any other governmental agency?	No

Location and Area of Campus				
Campus Type	Address	Location*	Campus Area in Acres	Built up Area in sq.mts.
Main campus area	Government Post graduate College, Someshwar	Rural	3.94133	895

## 2.2 ACADEMIC INFORMATION

<b>Details of Programmes Offered by the College (Give Data for Current Academic year)</b>						
<b>Programme Level</b>	<b>Name of Programme/ Course</b>	<b>Duration in Months</b>	<b>Entry Qualification</b>	<b>Medium of Instruction</b>	<b>Sanctioned Strength</b>	<b>No.of Students Admitted</b>
UG	BCom, Commerce	36	Intermediate	English + Hindi	240	75
UG	BSc, Science	36	Intermediate	English + Hindi	120	50
UG	BSc, Science	36	Intermediate	English + Hindi	105	27
UG	BA, Faculty Of Arts	36	Intermediate	English + Hindi	570	387
PG	MA, Hindi	24	Graduation	Hindi	80	19
PG	MA, English	24	Graduation	English	40	11
PG	MA, History	24	Graduation	English + Hindi	80	45
Doctoral (Ph.D)	PhD or DPhil, Faculty Of Arts	60	Post graduate	English + Hindi	2	2

### Position Details of Faculty & Staff in the College

<b>Teaching Faculty</b>												
	<b>Professor</b>				<b>Associate Professor</b>				<b>Assistant Professor</b>			
	Male	Female	Others	Total	Male	Female	Others	Total	Male	Female	Others	Total
Sanctioned by the UGC /University State Government	1				0				20			
Recruited	0	1	0	1	0	0	0	0	8	12	0	20
Yet to Recruit	0				0				0			
Sanctioned by the Management/Society or Other Authorized Bodies	0				0				0			
Recruited	0	0	0	0	0	0	0	0	0	0	0	0
Yet to Recruit	0				0				0			

<b>Non-Teaching Staff</b>				
	<b>Male</b>	<b>Female</b>	<b>Others</b>	<b>Total</b>
Sanctioned by the UGC /University State Government				17
Recruited	10	1	0	11
Yet to Recruit				6
Sanctioned by the Management/Society or Other Authorized Bodies				0
Recruited	0	0	0	0
Yet to Recruit				0

<b>Technical Staff</b>				
	<b>Male</b>	<b>Female</b>	<b>Others</b>	<b>Total</b>
Sanctioned by the UGC /University State Government				0
Recruited	0	0	0	0
Yet to Recruit				0
Sanctioned by the Management/Society or Other Authorized Bodies				0
Recruited	0	0	0	0
Yet to Recruit				0

### **Qualification Details of the Teaching Staff**

<b>Permanent Teachers</b>										
<b>Highest Qualification</b>	<b>Professor</b>			<b>Associate Professor</b>			<b>Assistant Professor</b>			<b>Total</b>
	Male	Female	Others	Male	Female	Others	Male	Female	Others	
D.sc/D.Litt/LLD/DM/MCH	0	0	0	0	0	0	0	0	0	0
Ph.D.	0	1	0	0	0	0	3	9	0	13
M.Phil.	0	0	0	0	0	0	0	0	0	0
PG	0	0	0	0	0	0	2	1	0	3
UG	0	0	0	0	0	0	0	0	0	0

<b>Temporary Teachers</b>										
<b>Highest Qualification</b>	<b>Professor</b>			<b>Associate Professor</b>			<b>Assistant Professor</b>			<b>Total</b>
	Male	Female	Others	Male	Female	Others	Male	Female	Others	
D.sc/D.Litt/LLD/DM/MCH	0	0	0	0	0	0	0	0	0	0
Ph.D.	0	0	0	0	0	0	2	0	0	2
M.Phil.	0	0	0	0	0	0	0	0	0	0
PG	0	0	0	0	0	0	1	2	0	3
UG	0	0	0	0	0	0	0	0	0	0



<b>Part Time Teachers</b>										
<b>Highest Qualification</b>	<b>Professor</b>			<b>Associate Professor</b>			<b>Assistant Professor</b>			<b>Total</b>
	<b>Male</b>	<b>Female</b>	<b>Others</b>	<b>Male</b>	<b>Female</b>	<b>Others</b>	<b>Male</b>	<b>Female</b>	<b>Others</b>	
D.sc/D.Litt/LLD/DM/MCH	0	0	0	0	0	0	0	0	0	0
Ph.D.	0	0	0	0	0	0	0	0	0	0
M.Phil.	0	0	0	0	0	0	0	0	0	0
PG	0	0	0	0	0	0	0	0	0	0
UG	0	0	0	0	0	0	0	0	0	0

<b>Details of Visting/Guest Faculties</b>				
<b>Number of Visiting/Guest Faculty engaged with the college?</b>	<b>Male</b>	<b>Female</b>	<b>Others</b>	<b>Total</b>
		3	2	0

**Provide the Following Details of Students Enrolled in the College During the Current Academic Year**

Programme		From the State Where College is Located	From Other States of India	NRI Students	Foreign Students	Total
UG	Male	148	0	0	0	148
	Female	390	0	0	0	390
	Others	0	0	0	0	0
PG	Male	13	0	0	0	13
	Female	62	0	0	0	62
	Others	0	0	0	0	0
Doctoral (Ph.D)	Male	2	0	0	0	2
	Female	0	0	0	0	0
	Others	0	0	0	0	0
Diploma	Male	0	0	0	0	0
	Female	0	0	0	0	0
	Others	0	0	0	0	0

<b>Provide the Following Details of Students admitted to the College During the last four Academic Years</b>					
<b>Category</b>		<b>Year 1</b>	<b>Year 2</b>	<b>Year 3</b>	<b>Year 4</b>
SC	Male	46	30	38	28
	Female	94	81	92	85
	Others	0	0	0	0
ST	Male	0	0	0	0
	Female	0	0	0	0
	Others	0	0	0	0
OBC	Male	7	8	4	3
	Female	24	24	23	27
	Others	0	0	0	0
General	Male	122	71	68	78
	Female	326	337	329	311
	Others	0	0	0	0
Others	Male	0	0	0	0
	Female	0	0	0	0
	Others	0	0	0	0
<b>Total</b>		<b>619</b>	<b>551</b>	<b>554</b>	<b>532</b>

### **Institutional preparedness for NEP**

1. Multidisciplinary/interdisciplinary:	1. College is creating an approach for curriculum changes with a multidisciplinary and all-inclusive education as the emphasis. 2. Affiliating university has created a new curriculum that incorporates outcome-based education and is in line with NEP 2020. 3. A number of BOS are revising the university-level curriculum to provide students more flexible alternatives. 4. A new planned curriculum created by our associated university based on NEP 2020 will be introduced, including multidisciplinary elective courses. 5. The curriculum includes specialised lessons on Bhagwatgeeta, yoga, life skills, value education, and Indian traditional knowledge. 6. Project work will be included in vocational education
---	--

	programmes. Link to the updated syllabus based on NEP 2020 <a href="https://www.ssju.ac.in/nep-syllabus">https://www.ssju.ac.in/nep-syllabus</a>
2. Academic bank of credits (ABC):	The Academic Bank of Credits Regulations of the UGC will be implemented gradually. NEP has been implemented from session 2022-2023 and it is compulsory for first year students to register in ABC through The new curriculum follows the ABC scheme. The three-year curriculum has been broken down into three programmes. At the undergraduate level, the first year is a certificate course with two semesters of 6 credits each. The second year is a diploma course with 6 credits per semester again. UG's third year will also consist of two semesters. The third year's semesters will each include ten credits. The students will receive a bachelor's degree after three years. For each of the first and second years, 4 credits have been set aside for side projects or optional courses. For the corresponding vocational course and research project, 3 and 4 credits are allotted.
3. Skill development:	The affiliating university's new curriculum gives skill development the attention it deserves. Some UG and PG level courses now include fresh courses on skill development. Below are a few instances from the new curriculum: 1. Amendments to writing and speaking approaches. 2. Proficiency in technical language. 3. Cultural and gender studies. 4. Acquiring good communication skills approaches. 5. Using computers and the internet. 6. Assignments, seminars, surveys, field trips, and practical skills. 7. Courses leading to certificates and degrees that promote entrepreneurship and self-employment. 8. Knowledge of tools, methods, lab etiquette, and best practices. 9. Conceptual understanding of gardening and nurseries. 10. Capability to collect and interpret statistical data. 11. Making short films. 12. Education about the environment. 13. Co-curricular activities. 14. Participation in NSS activities.
4. Appropriate integration of Indian Knowledge system (teaching in Indian Language, culture, using online course):	Indian knowledge system is an integral component of our new curriculum, which is based on NEP 2020. Below are a few instances from the new curriculum: 1. Vedic philosophy. 2. The history-based education system in India. 3. Upanishads, Gita, Puranas, Dharmshastras, the Ramayana, the Mahabharata, the Indian Vastushastra, Jatak katha, Panchtantra, Yoga, Ayurveda, Astrology, Karmkand, etc. 4. The Sanskrit

	<p>Sambhaashan. 5. Literature on partition. 6. A range of value-education units in a variety of streams. 7. Indian traditional medicines and remedial system. 8. IPR and traditional knowledge preservation. 9. Vedik Ganit. Link to the updated syllabus based on NEP 2020 <a href="https://www.ssju.ac.in/nep-syllabus">https://www.ssju.ac.in/nep-syllabus</a></p>
<p>5. Focus on Outcome based education (OBE):</p>	<p>Education that is outcome-based emphasises learning outcomes above learning procedures. Students are given specific goals to work toward, receive frequent assessments of their progress, and are provided individualised feedback on how well they have succeeded. College is gradually adopting an outcome-based education system in order to solve the unemployment issue. The affiliating university's new curriculum has all of the programme and course goals clearly specified. The majority of UG-level programmes now provide vocational, co-curricular, and skill development courses.</p>
<p>6. Distance education/online education:</p>	<p>Online education provides ample flexibility to students to learn and explore as per their requirements at their pace. HSB Government Post Graduate College, Someshwar used TCSioN class app tool and Google Class room, particularly during the Covid pandemic as it enabled conduct of online classes, management of attendance, submission of assignments. During the pandemic, most of the classes were conducted online and faculty members and students have gained experience on working with digital tools such as Moodle, OBS (Open Broadcaster Software), Google Tools, Online Whiteboards, YouTube to develop and deliver e-content, short videos, interactive power point presentations and other online content. With offline classes being pursued at present, the faculty and students at the institute are looking forward towards blended learning as it integrates the learning experience with a humane aspect. Therefore, the students can gain from the benefit of online teaching along with face-to-face interaction with tutor and fellow pupils. Students are also advised to engage in courses offered by online portals such as Swayam, NPTEL etc. to widen their sphere of knowledge and understanding and sharpen their skills.</p>

**Institutional Initiatives for Electoral Literacy**

1. Whether Electoral Literacy Club (ELC) has been set up in the College?	College has a dedicated Electoral Literacy Club (ELC) consisting with faculty members and student representatives. The primary objective of ELC is sensitizing the student community about democratic rights which includes casting votes in elections. We conduct mock polling activities to give the experience-based learning of the democratic setup. We also conduct poster presentations, debates, elocution, essay writing and other programs which create awareness regarding electoral procedures.
2. Whether students' co-ordinator and co-ordinating faculty members are appointed by the College and whether the ELCs are functional? Whether the ELCs are representative in character?	The Composition of College ELC is as follows: ELC Coordinator: Dr Vipin Chandra (Assistant Professor, Hindi) Faculty Member: Dr Sunita Joshi (Assistant Professor, Education) Student Representative (Boy): Mr Kuldeep (BA III Sem) Student Representative (Girl): Ms. Kanchan Tewari (MA III sem (Hindi)) College ELC is functional body which encourage students for voting in elections.
3. What innovative programmes and initiatives undertaken by the ELCs? These may include voluntary contribution by the students in electoral processes-participation in voter registration of students and communities where they come from, assisting district election administration in conduct of poll, voter awareness campaigns, promotion of ethical voting, enhancing participation of the under privileged sections of society especially transgender, commercial sex workers, disabled persons, senior citizens, etc.	College ELC celebrate "National Voters Day" every year on 25th January in which students conduct several activities voluntarily. ELC also organize voter registration camps through BLO. Our students participate in Voter Awareness Campaigns aimed in educating the public in the nearby villages. To create awareness and interest among faculties and students through workshops. To educate the targeted populations about voter registration, electoral process and related matters through hands on experience
4. Any socially relevant projects/initiatives taken by College in electoral related issues especially research projects, surveys, awareness drives, creating content, publications highlighting their contribution to advancing democratic values and participation in electoral processes, etc.	The ELC takes initiatives that are socially relevant to electoral related issues especially awareness drives, creating content, publications highlighting their contribution to advancing democratic values and participation in electoral processes. 1. To help the target audience understand the value of their vote to ensure that they exercise their suffrage right in a confident, comfortable and ethical manner. 2. To develop a culture of electoral participation and maximize the informed and ethical voting and follow the principle 'Nothing like voting, I vote for Sure'.
5. Extent of students above 18 years who are yet to be enrolled as voters in the electoral roll and efforts by ELCs as well as efforts by the College to	The students above 18 years who are to be enrolled as voters are sensitized about democratic rights which include casting votes in elections. ELC conduct voter

institutionalize mechanisms to register eligible students as voters.

registration drive conducted at Institute for above 18 yrs of age students.

## Extended Profile

---

### 1 Students

#### 1.1

Number of students year wise during the last five years

2021-22	2020-21	2019-20	2018-19	2017-18
619	551	554	532	501

File Description	Document
Upload supporting document	<a href="#">View Document</a>
Institutional data in the prescribed format	<a href="#">View Document</a>

### 2 Teachers

#### 2.1

Number of teaching staff / full time teachers during the last five years (Without repeat count):

Response: 43

File Description	Document
Upload supporting document	<a href="#">View Document</a>
Institutional data in the prescribed format	<a href="#">View Document</a>

#### 2.2

Number of teaching staff / full time teachers year wise during the last five years

2021-22	2020-21	2019-20	2018-19	2017-18
21	19	19	17	14

### 3 Institution

#### 3.1

Expenditure excluding salary component year wise during the last five years (INR in lakhs)

2021-22	2020-21	2019-20	2018-19	2017-18
15.03	56.10	5.98	15.31	1.49





## 4. Quality Indicator Framework(QIF)

### Criterion 1 - Curricular Aspects

#### 1.1 Curricular Planning and Implementation

##### 1.1.1 The Institution ensures effective curriculum planning and delivery through a well-planned and documented process including Academic calendar and conduct of continuous internal Assessment

###### Response:

The college has a range of courses graduates i.e. B.A., B.Com, B.Sc., and postgraduate course M.A. (Hindi, History and English). To make the curriculum employment oriented courses of Diploma in Yoga and Certificate in Computer Application have also been introduced in college.

The college works in the direction of providing an environment to students whereby they not only learn academic subjects but also develop skills necessary for life and self-empowerment. Learning outcomes (Program outcome and course outcome) are framed by the respective subject teachers at the beginning of session and evaluated at the end of the session. Remedial measures are adopted if any shortcomings are reported. The curriculum is delivered in student friendly manner to provide them maximum learning opportunities. As the college is located in rural region, all possible attempts are made to address the special needs of students coming from rural and educationally as well as economically disadvantaged society.

To become familiar with latest teaching techniques, facility of smart class is introduced and is used appropriately to provide maximum benefit to students. The curriculum involves a wide range of co-curricular activities conducted by different departments. Some of the co-curricular activities held periodically in the institution include organization of webinars by faculty members, organization of different completions for students ie. Exhibition, essay writing, poster and chart making, poem recitation, speeches, quiz and celebration of days of importance. Awareness and consciousness about Environmental issues is created among students through the compulsory course on environmental studies and NSS camps at graduate level. A number of sports activities are also held every year.

Thus, through the inclusion of above-mentioned wide range of activities the institution endeavors to ensure effective delivery of curriculum through a well-planned and documented process.

Institute follows the academic calendar as provided by affiliating university and make necessary change (as and when required) for the student prospective. College academic calendar is prepared keeping in mind university declaration of the last date of admission in the first semester classes, the date of commencement of teaching, the last date of admission for all the classes except for the first semester, duration of even odd semester examination.

As being affiliated college, institute is bound to conduct external examination as per university schedule and methodology. But in internal assessment, teachers are given full autonomy to evaluate student performance. Teachers conduct the internal evaluation unbiasedly by taking quizzes, test on short answer questions, assignment, class participation. Test and quizzes are conducted online as well as offline mode. The student has to undergo continuous assessment throughout the year which keeps him or her motivated to lift his or her performance level. The evaluated copies and assignments are shown to the students so that they can improve in that area. The marks of internal assessment obtained by the students

are uploaded in the university website. The institution definitely adheres to the academic calendar for the conduct of Continuous Internal Evaluation (CIE).

An exemplary document of curriculum planning for additional information is being uploaded.

File Description	Document
Upload Additional information	<a href="#">View Document</a>
Provide Link for Additional information	<a href="#">View Document</a>

## 1.2 Academic Flexibility

### 1.2.1 Number of Add on /Certificate/Value added programs offered during the last five years

Response: 1

File Description	Document
Upload supporting document	<a href="#">View Document</a>
Institutional data in the prescribed format	<a href="#">View Document</a>

### 1.2.2 Percentage of students enrolled in Certificate/ Add-on/Value added programs as against the total number of students during the last five years

Response: 0

#### 1.2.2.1 Number of students enrolled in subject related Certificate/ Add-on/Value added programs year wise during last five years

2021-22	2020-21	2019-20	2018-19	2017-18
0	0	0	0	0

File Description	Document
Institutional data in the prescribed format	<a href="#">View Document</a>

## 1.3 Curriculum Enrichment

### 1.3.1 Institution integrates crosscutting issues relevant to Professional Ethics, Gender, Human Values, Environment and Sustainability into the Curriculum

**Response:**

Various courses at undergraduate and post graduate level have course content that includes gender equality, human values environment and sustainability. The students are made aware of these issues through classroom teaching and also through co-curricular activities like NSS camp, cultural programs, blood donation camps, departmental programs. Various Programs are organized by different departments like celebration of International Woman’s Day, National Youth Day, Teacher’s Day.

In the program of BA the topics related to Environment, Human Value, and Ethics are included in the syllabus of Education in following Semesters and Papers:

Semester I, Paper I: Philosophical Foundations of Education, Unit III

Semester II, Paper I: Sociological Foundation of Education, Unit IV

Semester IV, Paper I: New Dimensions in Education, Unit III

These topics are discussed with a practical approach which develops awareness and positive attitude towards the concerned issues.

In the program of BA the topics related to Environment are included in the syllabus of Geography in following Semesters and Papers:

Semester III, Paper I, Climatology and Geography, Unit 1, 2, 3, 4

Semester IV, paper II, Environment Geography, Unit 1, 2, 3, 4

As per the instructions of UGC college has introduced compulsory six-module course on Environmental Studies at all undergraduate programmes. This course focuses on sustainable development to the future of mankind, Continuing problems of pollution, loss of forest, solid waste disposal, degradation of environment, issues like economic productivity and national security, Global warming, the depletion of ozone layer and loss of biodiversity have made everyone aware of environmental issues.

The college has its own polices prepared as per the vision and mission statement of the college. We have made separate waste management system for solid, liquid and e-waste in the campus. Sustainability related cross cutting issues are included in the University curriculum of B.Com (Commerce), B.Sc (Botany), B.Sc (Zoology) and B.Sc (Chemistry).

Apart from regular syllabus, the institution focuses on the integrated crosscutting issues like gender, human values, conservation of native culture and environment sustainability via its various programmes, seminars, webinars and workshops.

File Description	Document
Upload Additional information	<a href="#">View Document</a>
Provide Link for Additional information	<a href="#">View Document</a>

**1.3.2 Percentage of students undertaking project work/field work/ internships (Data for the latest completed academic year)**

**Response:** 6.79

### 1.3.2.1 Number of students undertaking project work/field work / internships

Response: 42

File Description	Document
Upload supporting document	<a href="#">View Document</a>
Institutional data in the prescribed format	<a href="#">View Document</a>

## 1.4 Feedback System

**1.4.1 Institution obtains feedback on the academic performance and ambience of the institution from various stakeholders, such as Students, Teachers, Employers, Alumni etc. and action taken report on the feedback is made available on institutional website (Yes or No)**

**Response:** Yes

File Description	Document
Upload supporting document	<a href="#">View Document</a>

## Criterion 2 - Teaching-learning and Evaluation

### 2.1 Student Enrollment and Profile

#### 2.1.1 Enrolment percentage

**Response:** 60.88

##### 2.1.1.1 Number of students admitted year wise during last five years

2021-22	2020-21	2019-20	2018-19	2017-18
289	234	225	268	232

##### 2.1.1.2 Number of sanctioned seats year wise during last five years

2021-22	2020-21	2019-20	2018-19	2017-18
425	425	425	425	350

File Description	Document
Upload supporting document	<a href="#">View Document</a>
Institutional data in the prescribed format	<a href="#">View Document</a>

#### 2.1.2 Percentage of seats filled against seats reserved for various categories (SC, ST, OBC, Divyangjan, etc. as per applicable reservation policy) during the last five years (Exclusive of supernumerary seats)

**Response:** 42.18

##### 2.1.2.1 Number of actual students admitted from the reserved categories year - wise during the last five years

2021-22	2020-21	2019-20	2018-19	2017-18
69	63	63	70	64

##### 2.1.2.2 Number of seats earmarked for reserved category as per GOI/ State Govt rule year wise during the last five years

2021-22	2020-21	2019-20	2018-19	2017-18
162	162	162	162	132

File Description	Document
Upload supporting document	<a href="#">View Document</a>
Institutional data in the prescribed format	<a href="#">View Document</a>

## 2.2 Student Teacher Ratio

### 2.2.1 Student – Full time Teacher Ratio (Data for the latest completed academic year)

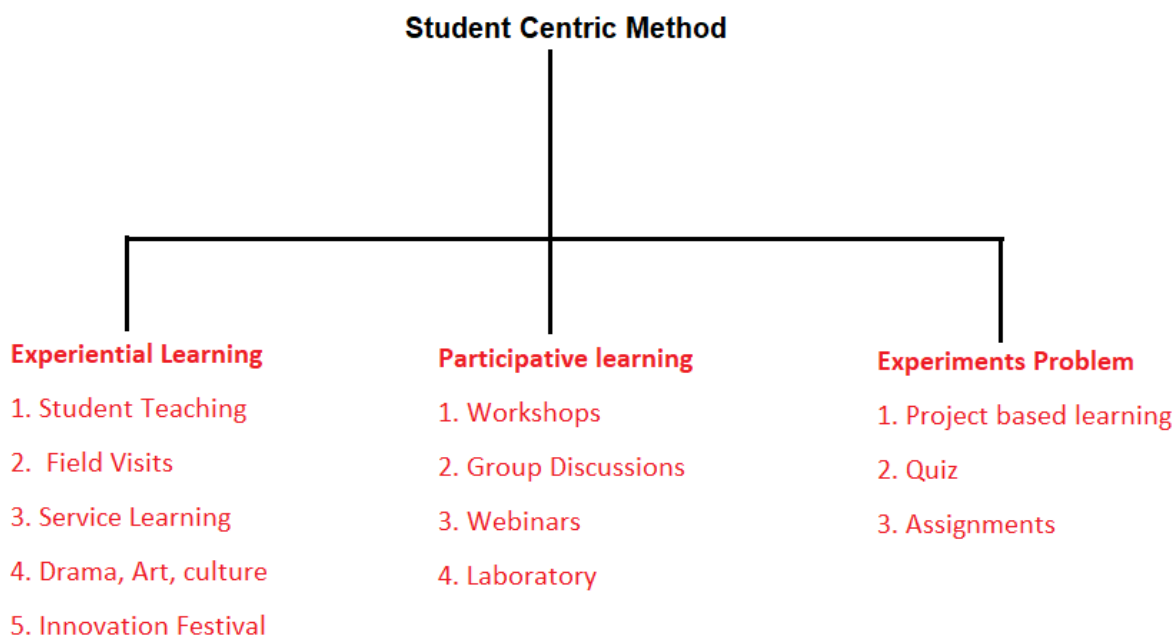
Response: 29.48

## 2.3 Teaching- Learning Process

### 2.3.1 Student centric methods, such as experiential learning, participative learning and problem solving methodologies are used for enhancing learning experiences using ICT tools

Response:

**Student Centric Method:** HSB Government Post Graduate College, Someshwar focuses on following student centric methods



In order to make teaching student centric:

We provide a democratic environment to the students.

They are encouraged to share their suggestions and requirements with us freely.

In accordance to that we facilitate an interactive learning environment.

We conduct practical sessions regularly in various disciplines.

Students participate in discourse during the class.

They raise their problems with the teachers. We take our students to the community for real life experiences and with such experiences they correlate their class room learning with life. The students make use of the library resources and computer labs also, where they interact with each other to enhance their learning.

Teaching-learning itself is an innovative and creative process. Our institute has adapted various innovative practices in teaching-learning.

We have ICT enabled classes in some departments where we use power point presentations to aid the regular blackboard teaching.

Students are also encouraged to complete and submit their assignments and projects with the help of ICT.

We organize various quizzes and competitions amongst students on various themes in which the students participate actively.

We are trying to shift from the traditional paradigm to a constructivist paradigm. Accordingly we help our student to construct their own understanding of the subject.

We provide them information about online modes of learning and encourage them to enroll in the online courses.

We employ ICT based teaching practices to make a two way interactive environment with major emphasis on interaction.

We take students to the nearby villages to integrate their learning with real life experiences, during NSS camps and field visits.

College has made time table for student so that each course could be conducted on smart class at least once a week.

During Covid-19 period, teacher and students got opportunity to use more online tools for teaching learning. College has taken feedback from students regarding online teaching, surprisingly the response of students were overwhelming. They have recommended online classes to be continued.

### **ICT-enable Infrastructure**

The campus premises are WiFi-enabled



Two smart classrooms.

One handy projector with laptop is used for teaching learning through AV mode.

One Computer lab equipper with 25 computers with internet connection enabled with audio-video facilities, help faculty and students to avail online content from within the campus

Teachers also use ICT-based tools like Zoom, Google Classroom, Kahoot!, Google tools, OBS and youtube to create interactions during video lectures, etc.

### Digital Library

**The digital library** of the college avails online content to the college community Calibre have been employed in library Provides access to e-books and news papers.

**e-PG Pathshala:** Students access curriculum-based, interactive quality e-content in 70 subjects across all disciplines College use alibre software, where students download ebooks and news papers within college premises.

File Description	Document
Upload Additional information	<a href="#">View Document</a>

## 2.4 Teacher Profile and Quality

### 2.4.1 Percentage of full-time teachers against sanctioned posts during the last five years

**Response:** 92.78

#### 2.4.1.1 Number of Sanctioned posts / required positions for teaching staff/ full time teachers year wise during the last five years:

2021-22	2020-21	2019-20	2018-19	2017-18
21	19	19	19	19

File Description	Document
Upload supporting document	<a href="#">View Document</a>

### 2.4.2 Percentage of full time teachers with NET/SET/SLET/ Ph. D. / D.M. / M.Ch. / D.N.B Superspeciality / D.Sc. / D.Litt. during the last five years (consider only highest degree for count)

**Response:** 56.67

**2.4.2.1 Number of full time teachers with NET/SET/SLET/Ph. D. / D.M. / M.Ch. / D.N.B Superspeciality / D.Sc. / D.Litt. year wise during the last five years**

2021-22	2020-21	2019-20	2018-19	2017-18
20	17	8	4	2

File Description	Document
Upload supporting document	<a href="#">View Document</a>
Institutional data in the prescribed format	<a href="#">View Document</a>

**2.5 Evaluation Process and Reforms****2.5.1 Mechanism of internal/ external assessment is transparent and the grievance redressal system is time- bound and efficient****Response:**

Internal evaluation is made through various modes such as assignments, power point presentations practical examination, quizzes, group discussion and classrooms tests. In conducting the internal examination for all UG and PG classes the examination committee of the college takes necessary initiatives such as determining the examination schedule and arrangements for invigilators. The students overall performance in academic as well as in co-curricular activities are monitored closely by their respective teachers and while making the summative evaluation, different factors such as students participation in cocurricular activities and other college events, punctuality and regularity etc. are also taken into account to ensure and maintain the decorum of examination rules laid by the University and college. Internal marks are uploaded online on the website of University and one hard copy (forwarded by the college Principal) is sent to the Examination Controller of the University and another hard copy is preserved by the Principal of the college so that any disparity or mismatch (arising at any later stage) can be cleared. Class tests and weekly presentations in class are other mechanism whereby students' progress is evaluated and communicated to them. Students are given an opportunity to improve their performance in presentation and class tests.

A student is not satisfies with his/her internal evaluation may directly contact to concern teacher, if still he does not get satisfies, he need to given an application to the principal and principal may ask the teacher for justification. The college has been trying sincerely to make the internal evaluation system as transparent as possible. Students are intimated at the beginning of the semester about the schedule of their internal exams. Teachers try hard to be fair and just while evaluating the examination copies of the students. While setting up the question papers marks of each question are written separately in front of the question so as to make it very clear. During evaluation, marks attained are mentioned for each question separately. The internal assessment papers are discussed with the students and marks are shown to them and then uploaded on the University website. In the faculty of education internal marks are displayed on the departmental notice board. Evaluation is made impartially. If the student has any complaint regarding the discrepancy in evaluation or regarding the question paper or even the schedule.

As college is affiliated by Soban Singh Jeena Unibversity, Almora, hence external examinations are conducted by the university. A student not satisfies with his/her assasement has to give an application alongwith marksheet to the examination incharge of college. The same application with covering letter by principlas is forwarded to the cvontroller of examination of the affiliated uniersity. University authority take necessary action on that. A student can demand copy of his/her evaluated answer scripts under h RTI Act, 2005 from university which is a time bound process. The University provides the facility of scrutiny of marks awarded to the students and also the opportunity to appear in Improvement Examination on fulfilling certain conditions. The whole process from admission to the uploading of the marks of Internal Assessment has been digitalized giving way to complete transparency and fairness.

File Description	Document
Upload Additional information	<a href="#">View Document</a>
Provide Link for Additional information	<a href="#">View Document</a>

## 2.6 Student Performance and Learning Outcomes

### 2.6.1 Programme Outcomes (POs) and Course Outcomes (COs) for all Programmes offered by the institution are stated and displayed on website and attainment of POs and COs are evaluated

#### Response:

To assure the quality enhancement process of a institute, evaluation of the attainment of program-specific outcome is must. The academic progress of the students is continuously supervised by concern faculty and Heads of Departments for effective attainment of program outcomes. The institute ensures the outcome of the programs over the analysis of the internal and external examination results and achievements in the sports, cultural and extension activities.

The NSS units of the college organizes various community-oriented activities. These efforts help to develop socio-ethical values and develop community service attitude among the students. The assessment tools and processes used for measuring the attainment of each PO's, PSO's and CO's are direct and indirect methods.

**Direct methods** are provided through external examination by observations of students' knowledge or skills against measurable course outcomes. The knowledge and skill defined by the course outcomes are mapped to specific problems on internal examination.

**Indirect assessment method** includes from students' feedback, survey, employability and progression to higher education. The unique feature of this mechanism is that there is an excellent combination of subjective observation and objective assessment of the students' performance.

For the desired outcomes, the college first organizes various activities to get outcomes and then does its evaluation by various ways. The methods implemented for the assessments of program outcomes, program specific outcomes and course outcomes are as follows:

**Formative Assessment:** As a part of continuous evaluation the formative assessment of students' performance is conducted. This includes: Home Assignments, Unit Tests, Surprise Tests, Seminars, Projects and Group Discussions.

**Summative Assessment:** The performance of the students in external examination conducted by university is the source to assess their summative assessments. This includes assessment in theory and practical examination. The institute examines course-wise results and the faculties are suggested to take measures to improve students' performance in the examination accordingly. These are the other ways of measuring the outcomes whereas many other aspects of outcomes are evaluated indirectly through their performance such as active involvement in curricular, co-curricular, extra-curricular activities, sports, cultural, debate, elocution and N.S.S. program. The teachers also assess the development of students and their performance through observation. Through classroom interactions, question answer sessions, personal counseling, etc. teachers measure the course attainments of the students. The participation of the students in departmental activities, study tours, field visits, etc. also helps in gauging the growth of the student.

File Description	Document
Upload Additional information	<a href="#">View Document</a>

## 2.6.2 Pass percentage of Students during last five years

**Response:** 85.38

### 2.6.2.1 Number of final year students who passed the university examination year wise during the last five years

2021-22	2020-21	2019-20	2018-19	2017-18
146	146	130	96	130

### 2.6.2.2 Number of final year students who appeared for the university examination year-wise during the last five years

2021-22	2020-21	2019-20	2018-19	2017-18
159	171	164	116	149

File Description	Document
Upload supporting document	<a href="#">View Document</a>
Institutional data in the prescribed format	<a href="#">View Document</a>

## 2.7 Student Satisfaction Survey

### 2.7.1 Online student satisfaction survey regarding teaching learning process

**Response:** 3.51

File Description	Document
Upload database of all students on roll	<a href="#">View Document</a>

## Criterion 3 - Research, Innovations and Extension

### 3.1 Resource Mobilization for Research

**3.1.1 Grants received from Government and non-governmental agencies for research projects / endowments in the institution during the last five years (INR in Lakhs)**

**Response:** 0

**3.1.1.1 Total Grants from Government and non-governmental agencies for research projects , endowments, Chairs in the institution during the last five years (INR in Lakhs)**

2021-22	2020-21	2019-20	2018-19	2017-18
0	0	0	0	0

**File Description**

**Document**

Institutional data in the prescribed format

[View Document](#)

### 3.2 Innovation Ecosystem

**3.2.1 Institution has created an ecosystem for innovations and has initiatives for creation and transfer of knowledge**

**Response:**

HSB Government Post Graduate College, Someshwar has created an ecosystem for innovations and other initiatives for creation and transfer of knowledge by developing desirable human resources, taking care for creation and dissemination of knowledge. Faculty members are encouraged to undergo professional development programme and to organise as well as participate in conferences, seminar and workshops. Faculty members are also encouraged to do research, paper publication. Our college has been encouraging a spirit of encompass various outreach programmes for creating and transfer of knowledge. The details are as under-

- **Green Initiative and awareness programmes-** The institution always maintained its greenery in the campus in order to improve the student's quality of life. The green campus initiative include restricted entry of automobiles. Green Audit is conducted to make the campus and eco-friendly. A rainwater harvesting is also there in college, to recharge the groundwater level.
- **Knowledge Sharing-** The Departments in the college organise programmes to educate students as well as society on significant days such as World Environment Day, International Women's Day, International Yoga Day and National Voter's Day etc.
- **ICT Facilities are applied by the college for the enhancement of the students-**

**1) E-Library:** The institute has well equipped Digital-Library with E-granthalay 4.0 (Integrated Library

Management Software), Barcode enabled smart Library card, OPAC, an E- library on LAN of open access 100 books and 1000 e-newspaper for free, NDLI club membership and variety of QR codes to access on the go.

**2) Online Competitions:** Faculties prepare online quiz for students with the help of Google form and Quizizz app.

**3) Departmental and Faculty own Website:** Departments of our college recently launched its own self-developed website and established its own capacity building centre for the benefits of students preparing for govt. jobs.

- **College Magazine-** Our college publishes an annual magazine namely " Kaushiki-Ek Jeevandhara". In the magazine, various activities and achievements of both staff and students are included.

File Description	Document
Upload Additional information	<a href="#">View Document</a>

### ***3.2.2 Number of workshops/seminars/conferences including on Research Methodology, Intellectual Property Rights (IPR) and entrepreneurship conducted during the last five years***

**Response: 2**

#### **3.2.2.1 Total number of workshops/seminars/conferences including programs conducted on Research Methodology, Intellectual Property Rights (IPR) and entrepreneurship year wise during last five years**

2021-22	2020-21	2019-20	2018-19	2017-18
2	0	0	0	0

File Description	Document
Upload supporting document	<a href="#">View Document</a>
Institutional data in the prescribed format	<a href="#">View Document</a>

### **3.3 Research Publications and Awards**

#### ***3.3.1 Number of research papers published per teacher in the Journals notified on UGC care list during the last five years***

**Response: 0.33**

**3.3.1.1 Number of research papers in the Journals notified on UGC CARE list year wise during the last five years**

2021-22	2020-21	2019-20	2018-19	2017-18
4	6	0	2	2

File Description	Document
Upload supporting document	<a href="#">View Document</a>
Institutional data in the prescribed format	<a href="#">View Document</a>

**3.3.2 Number of books and chapters in edited volumes/books published and papers published in national/ international conference proceedings per teacher during last five years**

**Response:** 0.26

**3.3.2.1 Total number of books and chapters in edited volumes/books published and papers in national/ international conference proceedings year wise during last five years**

2021-22	2020-21	2019-20	2018-19	2017-18
7	3	0	1	0

File Description	Document
Upload supporting document	<a href="#">View Document</a>
Institutional data in the prescribed format	<a href="#">View Document</a>

**3.4 Extension Activities****3.4.1 Extension activities are carried out in the neighborhood community, sensitizing students to social issues, for their holistic development, and impact thereof during the last five years.**

**Response:**

The college is committed to holistic development of students by involving them in community services. various programmes being run by the college for promoting college neighborhood network and student engagement are:

**Adoption of villages- In**

order to directly focus on the social and sustainable issues the college has adopted 1 village namely "Mallkholi" located near Someshwar. College carries out various activities like creating awareness about health issues. Yoga camps and Swachta Abhiyan, has also been repeatedly carried out by the college.



**NSS-** About 100 students have enrolled their names as NSS Volunteers. The motto of NSS is "Not Me But You". Service to mankind is service to god. Imparting such values and attitude in to students is the motive of the institution. Believing in this, the institute carries out a number of extension activities in the neighbourhood community. .The NSS units concentrates on the welfare of the neighbourhood community and sensitizes their social problems and takes necessary steps for the betterment of the society. These social outreach programmes brought a great impact on the holistic development of the students as they come across different categories of the people and their living standards.

**Other Events-** The college organises various events from time to time to create awareness about pertinent social issues and make the presence of the college felt in the area, some of these as follows:Tree plantation, Himalay Diwas, Mahila Diwas, National Law day, Voter awareness rallies, Sanitation, Blood Donation, No Tobacco, Aids awareness, save water, Beti padao beti bachao, River cleaning etc.

File Description	Document
Upload Additional information	<a href="#">View Document</a>

### 3.4.2 Awards and recognitions received for extension activities from government / government recognised bodies

**Response:**

HSB GPGC Someshwar (Almora) has been at the forefront in reaching out to community through extension and outreach activities. A number of extension activities conducted in the college campus, nearby localities and villages have earned appreciation for the volunteers; brought a positive change in the work areas and sensitised the students deeply about social issues. While these programmes help the students become more socially conscious by imbibing the values of responsible citizenship and also enhance community's wellbeing. Various Certificates of appreciation was given to the college for its contribution towards the betterment of society.

Some of these appreciations are as follows.

- Spreading awareness about AIDS
- Water Conservation program
- Voter's awareness rallies
- "Beti Bachao Beti Padao " under women empowerment program
- Cleaning of koshi river
- Nasha Mukti abhiyan
- Tree Plantation
- Sanitation programs
- Sustainability
- Environment Conservation etc.

File Description	Document
Upload Additional information	<a href="#">View Document</a>

**3.4.3 Number of extension and outreach programs conducted by the institution through NSS/NCC/Red cross/YRC etc., (including the programmes such as Swachh Bharat, AIDS awareness, Gender issues etc. and/or those organised in collaboration with industry, community and NGOs) during the last five years**

**Response: 23**

**3.4.3.1 Number of extension and outreach Programs conducted in collaboration with industry, community, and Non- Government Organizations through NSS/ NCC/ Red Cross/ YRC etc., year wise during the last five years**

2021-22	2020-21	2019-20	2018-19	2017-18
10	6	3	2	2

File Description	Document
Upload supporting document	<a href="#">View Document</a>
Institutional data in the prescribed format	<a href="#">View Document</a>

### 3.5 Collaboration

**3.5.1 Number of functional MoUs/linkages with institutions/ industries in India and abroad for internship, on-the-job training, project work, student / faculty exchange and collaborative research during the last five years.**

**Response: 1**

File Description	Document
Upload supporting document	<a href="#">View Document</a>
Institutional data in the prescribed format	<a href="#">View Document</a>

## Criterion 4 - Infrastructure and Learning Resources

### 4.1 Physical Facilities

#### 4.1.1 Availability of adequate infrastructure and physical facilities viz., classrooms, laboratories, ICT facilities, cultural activities, gymnasium, yoga centre etc. in the institution

##### Response:

College has three blocks, main block having admin block, library, smart class room, conference room, auditorium and arts faculty. Second block consists with Commerce department and third block is dedicated to science laboratories.

College has 10 classrooms and 1 smart class room, 1 conference room cum smart class. Separate labs for science subjects and geography are available and equipped with sufficient practical equipment. Separate rooms are available for each department. Faculty of arts, science and commerce are provided computers and printers separately with internet connections. Smart classroom are equipped with wi-fi connectivity for rigorous teaching and learning using audio and visual adds. Two treadmills are installed one for each girls and boys. Yoga centre is being established in the college campus where students can rejuvenate themselves.

##### Facilities for Teaching Learning Activities:

1. Green campus with variety of trees and plants in surrounding.
2. Classrooms with optimum facilities.
3. Principal Chamber with computer & internet connection and telephone facility.
4. IQAC Cell having computer, printer and internet facility.
5. Separate Common Room for girls.
6. Separate wash rooms for students and staff members.
7. Yoga center is available for students
8. Inverter/UPS facility for office and principal room.
9. Library having reference books, encyclopaedia and newspapers with reading rooms for students and staff.
10. Art, Scien and commerce faculty having computers, printers with internet connectivity .
11. Wifi connectivity in entire campus. .

##### Facilities for Extra-Curricular activities:

1. Separate office for NSS and required equipment.

## 2. Separate office for sports and required equipment.

**Facilities for cultural activities:** The college has a Cultural Committee. This committee manages the various cultural activities in the college. The college organizes the cultural events within the college and the selected participants are included in the college team to participate at the University level cultural competitions. A cultural committee has been formed in the college. A practice room for cultural activities has also been allotted. A huge open stage is available in the college ground. The college has an auditorium for a gathering of more than 150 students.

**Facility for Sports:** Institute has a separate sports office cum store room. The institution has outdoor volley ball ground, hockey ground, kabaddi ground, and facility of cricket net-practice. Whereas an indoor badminton court is available. 2 Table tennis are available one for boys and one for girls. Students can also utilize indoor sports facilities like carrom, chess etc.

### **ICT Facility:**

Moreover, the institute has added projectors and computers through SC Sub Plan and RUSA to its IT segment. They are frequently used for online classes, webinars, seminars and workshops whenever needed. New computers have been added to computer lab and virtual laboratory. All the departments of the college have been equipped with computers & internet facility. Teachers use them regularly for their academic purposes. Teachers give lectures through PPT to make teaching –learning more interesting. Important/relevant website-recourses are communicated to students for further enriching/expanding their knowledge. PG students use ICT to make their PPTs for assignments/seminars in internal examinations.



File Description	Document
Upload Additional information	<a href="#">View Document</a>
Provide Link for Additional information	<a href="#">View Document</a>

#### 4.1.2 Percentage of expenditure, excluding salary for infrastructure augmentation during last five years (INR in Lakhs)

**Response:** 92.24

##### 4.1.2.1 Expenditure for infrastructure augmentation, excluding salary during the last five years (INR in lakhs)

2021-22	2020-21	2019-20	2018-19	2017-18
13.09516	54.67171	4.785	13.86689	0.20

File Description	Document
Upload supporting document	<a href="#">View Document</a>
Institutional data in the prescribed format	<a href="#">View Document</a>

## 4.2 Library as a Learning Resource

#### 4.2.1 Library is automated using Integrated Library Management System (ILMS), subscription to e-resources, amount spent on purchase of books, journals and per day usage of library

**Response:**

##### Automated library and online services

The college library is intended for enhancing the academic, intellectual, informational, inspirational and spiritual requirements of the academia with its rich resources and services.

The library provides open access to its collection and any member can browse through the collections which are arranged on the basis of DDC 23 ed.

The library has a collection of over 5300 text books and reference books in print.

The library is fully automated using **e-Granthalaya**. (e-Granthalaya : A Digital Agenda For Library Automation and Networking (egranthalaya.nic.in)) integrated library management system (ILMS). Library is automated since 2021 which helped the library to perform its in-house operations like acquisition, technical processing, (Classification and Cataloguing) circulation, very effectively and to achieve its other functions as the number of staff is becoming less.

The bibliographic details of all the documents in library can be searched online remotely through the Online public access Catalogue through android based mobile app or from the college library link available on the college website.

The library is WiFi-enabled and provided with computer access to browse **online contents**

Total seating capacity for **50** persons simultaneously.

**Digital Database and e-Resources**

Online resources are available at **Calibre software on LAN**, from where students can use e-books and newspapers.

College Library has NDLI Clube with more then 200 members from the college. On the Clubs digital platform members gets opportunity to not only participate in varies activity and learn from the experts living other part of the country.

**Article delivery on request:**

The library also delivers articles to which the users do not have access through inter-library and various network arrangements. YUsage of library is automatically calculated using e-granthalaya software and manually through visitor register.

File Description	Document
Upload Additional information	<a href="#">View Document</a>
Provide Link for Additional information	<a href="#">View Document</a>

**4.3 IT Infrastructure**

**4.3.1 Institution frequently updates its IT facilities and provides sufficient bandwidth for internet connection**

**Response:**

In spite of all financial constraints college 's IT facilities are regularly updated; college has updated its internet connections with 3 optical fibre connections which provides sufficient bandwidth for college requirement. On September 21, 2021 Honourable cabinet minister and MLA Someshwar Smt. Rekha Arya inaugurated 4G WIFI facility at college to facilitate it with high-speed internet connectivity.

Earlier college had one broadband connection for internet. After that college upgraded IT facility by taking one additional broadband connection with unlimited data.

Now as student strength and number of faculty members of college increases and requirement of technology is must for every aspect of teaching and learning, college upgraded IT facility by taking

additional Optical fibre connection on February 2021.

Later college upgraded all broadband connection into Optical fibre connection.

Currently college has 3 optical fibre connections with the following bandwidths:

Connection 1 Plan: Upto 200 Mbps Till 4 TB,Upto 15 Mbps beyond

Connection 2 Plan: Upto 200 Mbps Till 3.3 TB,Upto 20 Mbps beyond

Connection 3 Plan: Upto 150 MBPS TILL 2000 GB, Upto 10 MBPS beyond

College has installed 5 routers to enable college fully wi-fi, which is available for all staffs and students.

College has a computer lab for students with 25 desktops and desktops in Library are also installed where student can download e books/ Journals free of cost.

Despite having computer lab all student were facilitated with free Tablet (with latest composition) by direct bank transfer (DBT) in academic year 2021-22. This initiative strengthen students to use IT facilities in college campus.

File Description	Document
Upload Additional information	<a href="#">View Document</a>
Provide Link for Additional information	<a href="#">View Document</a>

#### 4.3.2 Student – Computer ratio (Data for the latest completed academic year)

**Response:** 19.97

##### 4.3.2.1 Number of computers available for students usage during the latest completed academic year:

Response: 31

File Description	Document
Upload supporting document	<a href="#">View Document</a>

## 4.4 Maintenance of Campus Infrastructure

#### 4.4.1 Percentage of expenditure incurred on maintenance of infrastructure (physical and academic support facilities) excluding salary component during the last five years (INR in Lakhs)

**Response:** 7.7

**4.4.1.1 Expenditure incurred on maintenance of infrastructure (physical facilities and academic support facilities) excluding salary component year wise during the last five years (INR in lakhs)**

2021-22	2020-21	2019-20	2018-19	2017-18
1.93417	1.38824	1.18965	1.43575	1.28754

<b>File Description</b>	<b>Document</b>
Upload supporting document	<a href="#">View Document</a>
Institutional data in the prescribed format	<a href="#">View Document</a>



## Criterion 5 - Student Support and Progression

### 5.1 Student Support

#### 5.1.1 Percentage of students benefited by scholarships and freeships provided by the Government and Non-Government agencies during last five years

**Response:** 29.89

5.1.1.1 Number of students benefited by scholarships and freeships provided by the Government and Non-Government agencies year wise during last five years

2021-22	2020-21	2019-20	2018-19	2017-18
613	27	49	56	79

File Description	Document
Upload supporting document	<a href="#">View Document</a>
Institutional data in the prescribed format	<a href="#">View Document</a>

#### 5.1.2 Capacity building and skills enhancement initiatives taken by the institution include the following

1. Soft skills
2. Language and communication skills
3. Life skills (Yoga, physical fitness, health and hygiene)
4. ICT/computing skills

**Response:** C. 2 of the above

File Description	Document
Upload supporting document	<a href="#">View Document</a>
Institutional data in the prescribed format	<a href="#">View Document</a>

#### 5.1.3 Percentage of students benefitted by guidance for competitive examinations and career counseling offered by the Institution during the last five years

**Response:** 20.57

5.1.3.1 Number of students benefitted by guidance for competitive examinations and career counselling offered by the institution year wise during last five years

2021-22	2020-21	2019-20	2018-19	2017-18
132	121	85	105	124

File Description	Document
Upload supporting document	<a href="#">View Document</a>
Institutional data in the prescribed format	<a href="#">View Document</a>

#### 5.1.4 The Institution has a transparent mechanism for timely redressal of student grievances including sexual harassment and ragging cases

1. Implementation of guidelines of statutory/regulatory bodies
2. Organisation wide awareness and undertakings on policies with zero tolerance
3. Mechanisms for submission of online/offline students' grievances
4. Timely redressal of the grievances through appropriate committees

**Response:** A. All of the above

File Description	Document
Upload supporting document	<a href="#">View Document</a>

## 5.2 Student Progression

#### 5.2.1 Percentage of placement of outgoing students and students progressing to higher education during the last five years

**Response:** 24.71

##### 5.2.1.1 Number of outgoing students placed and / or progressed to higher education year wise during the last five years

2021-22	2020-21	2019-20	2018-19	2017-18
48	46	33	48	15

##### 5.2.1.2 Number of outgoing students year wise during the last five years

2021-22	2020-21	2019-20	2018-19	2017-18
164	171	162	116	156

File Description	Document
Upload supporting document	<a href="#">View Document</a>
Institutional data in the prescribed format	<a href="#">View Document</a>

**5.2.2 Percentage of students qualifying in state/national/ international level examinations during the last five years (eg: JAM/CLAT/GATE/ GMAT/ CAT/ GRE/ TOEFL/ Civil Services/State government examinations)**

**Response:** 100

**5.2.2.1 Number of students qualifying in state/ national/ international level examinations (eg: JAM/CLAT/NET/ SLET/ GATE/ GMAT/CAT/GRE/ TOEFL/ Civil Services/ Judicial Services/Public Prosecution services/All India Bar Exams/State government examinations) year wise during last five years**

2021-22	2020-21	2019-20	2018-19	2017-18
0	0	0	1	1

**5.2.2.2 Number of students appearing in state/ national/ international level examinations (eg: JAM/CLAT/NET/ SLET/ GATE/ GMAT/CAT,GRE/ TOFEL/ Civil Services/ State government examinations) year wise during last five years**

2021-22	2020-21	2019-20	2018-19	2017-18
0	0	0	1	1

File Description	Document
Upload supporting document	<a href="#">View Document</a>
Institutional data in the prescribed format	<a href="#">View Document</a>

### 5.3 Student Participation and Activities

**5.3.1 Number of awards/medals for outstanding performance in sports/ cultural activities at University / state/ national / international level (award for a team event should be counted as one) during the last five years**

**Response:** 4

**5.3.1.1 Number of awards/medals for outstanding performance in sports/cultural activities at**

*national/international level (award for a team event should be counted as one) year wise during the last five years*

2021-22	2020-21	2019-20	2018-19	2017-18
0	2	0	0	2

File Description	Document
Upload supporting document	<a href="#">View Document</a>
Institutional data in the prescribed format	<a href="#">View Document</a>

### 5.3.2 Average number of sports and cultural programs in which students of the Institution participated during last five years (organised by the institution/other institutions)

**Response:** 4.8

#### 5.3.2.1 Number of sports and cultural programs in which students of the Institution participated year wise during last five years

2021-22	2020-21	2019-20	2018-19	2017-18
6	0	5	5	8

File Description	Document
Upload supporting document	<a href="#">View Document</a>
Institutional data in the prescribed format	<a href="#">View Document</a>

## 5.4 Alumni Engagement

### 5.4.1 There is a registered Alumni Association that contributes significantly to the development of the institution through financial and/or other support services

**Response:**

College has more than 4000 alumni. The institution has functional non- registered Alumni Association of its own. Alumni members give valuable suggestions which prove to be very crucial in the development of the College and the students. Senior alumni are regularly invited on the occasions of various functions, i.e., annual function, national festivals where the students get benefitted with the valuable interaction with them. Senior alumni also visit College from time to time to share their experience. Every year the alumni members help the new students in the admission process and also guide them to choose the best subject

combinations. Alumni of the college are working in different professions and some them are ingaged in Social Working in the capacity of Gram Prdhan and Ward Members.

Alumni members are invited to Deliver talks, guest lectures and seminars. College alumni actively help in organization and management of extensive outreach activities.

Further registration process of alumni association is being processed.

<b>File Description</b>	<b>Document</b>
Provide Link for Additional information	<a href="#">View Document</a>

## Criterion 6 - Governance, Leadership and Management

### 6.1 Institutional Vision and Leadership

**6.1.1 The governance and leadership is in accordance with vision and mission of the institution and it is visible in various institutional practices such as decentralization and participation in the institutional governance**

**Response:**

The vision of the college is to provide affordable quality education, encourage multidisciplinary learning, while equipping students with knowledge and skills in their chosen stream, train them to be efficient, empathetic and socially responsible individuals, train them to meet and exceed challenges as active participants in shaping the future of our world and above all shape them into good human beings.

The College is governed under the leadership of the Principal appointed by the Department of Higher Education, Uttarakhand Government. It promotes participative management, for that the Principal decentralizes the governance of the different administrative activities by forming different committees headed by a coordinator and followed by the members. Various committees organize meetings regarding matters and then implement the decision. Meetings with elected student representatives are also conducted timely to get update of student's issues and problems. The Principal and the committee members not only encourage students to achieve academic excellence but also facilitate their overall development.

Following are the important committees which comprises of three to four faculty members and the most important is the coordinator who is primarily responsible for the action of the committee.

- Admission Committee
- Examination Committee
- Proctorial committee
- Students Union Committee
- Career Counselling committee
- Cultural Programme Committee
- Sports Committee
- College Development Committee
- Campus Development & Beautification Committee
- Anti Drug Committee
- RTI Committee
- Scholarship Committee
- Land and Building Committee
- PTA Committee
- RUSA Committee
- Purchase Committee
- Professional Curriculum Committee
- RUSA Project Monitoring Committee
- Board of Governer
- Grievances Cell
- Skill Development Committee

File Description	Document
Provide Link for Additional information	<a href="#">View Document</a>

## 6.2 Strategy Development and Deployment

### 6.2.1 The functioning of the institutional bodies is effective and efficient as visible from policies, administrative setup, appointment and service rules, procedures, deployment of institutional Strategic/ perspective/development plan etc

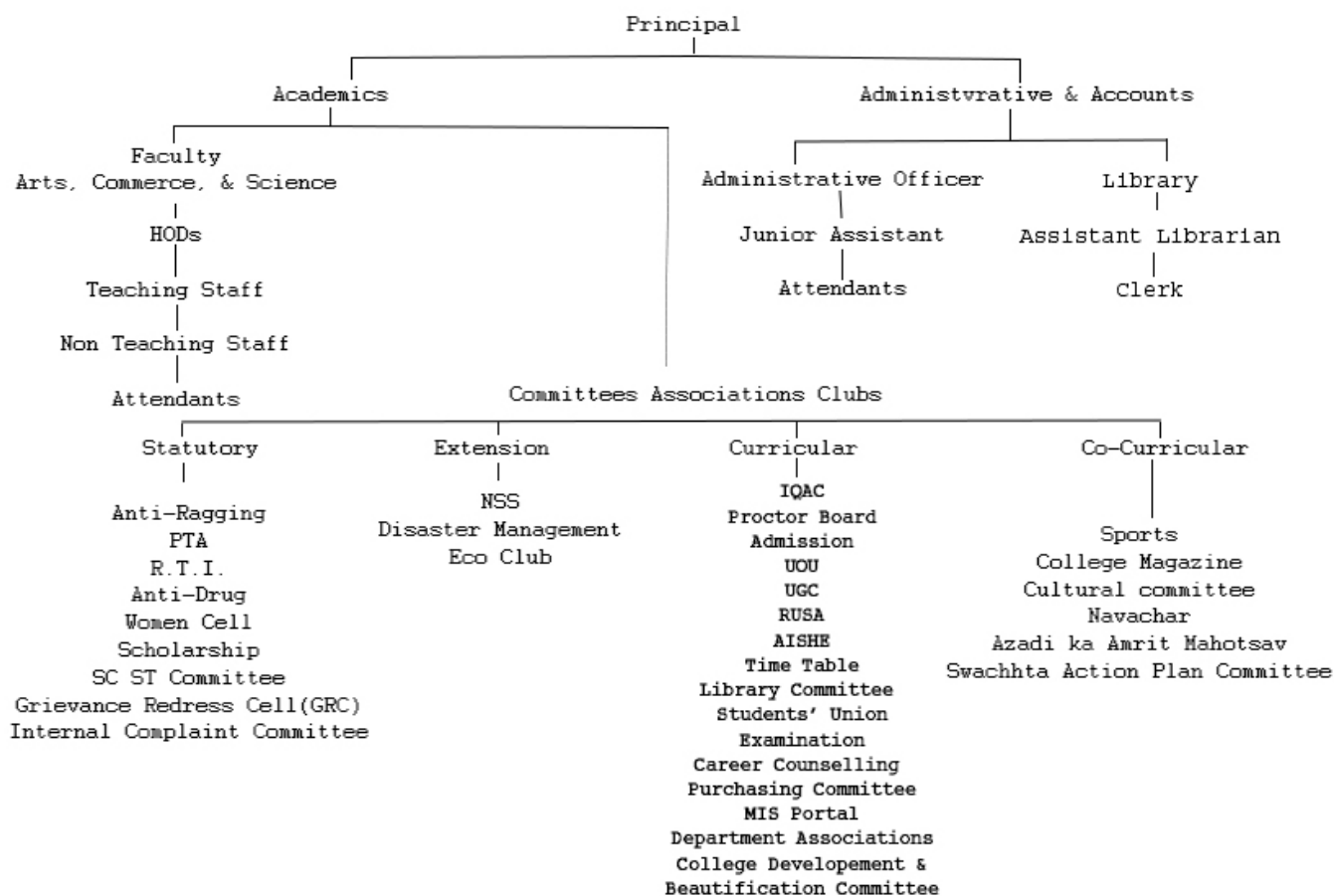
#### Response:

The college is headed by the Principal of the college. However, the policies and procedural modalities are made centrally by the Directorate, Higher Education of Uttarakhand Government. The institution is effective and efficient as visible from policies, administrative setup, appointment, service rules and procedures as depicts by the organogram of the college.

#### Administrative Setup:

The Principal primarily guided the institute in Academic Progress, Administrative Matters and Admission processes. These all administrative setup is decentralized by constituting various committees/ Associations/ Cell to attain continuous quality in functioning of the college. The Principal is also Chief Information Officer of the College and overall involves in all the administrative and planning including the Academic Calendar. The Examination in charge monitors all the Examination Process. Faculty members play an important role in executing Curricular, co-curricular and other Programmes. Head of the Department involves in preparing the time table. Department Council made by the Respective Department head and various co-curricular Activities and other extra- Curricular activities conducted for the students. College has Proctorial Board. Chief Proctor redresses the Grievance and is responsible for maintaining the discipline in the College. Data compilation of the whole process is later done by the Non-Teaching Staff particularly by Senior Administrative Officer and Junior Assistant.

Organogram of H.S.B. Govt. P.G. College Someshwar



**Deployment of institutional Strategic/ perspective/ development plan:**

The college is continuously working to facilitate a student centric development, enhance social relevance of the institution, strengthening spiritual vitality and identification of sources for mobilization of funds. In admission process, students are admitted in first semester of UG and PG courses through their merit in previous qualifying examination against the fixed number of seats available in each course of the college. The students themselves register online on University portal for admission and thereafter contact respective committees. The head of the institution tries to assign different sort of college duties and responsibilities to the staff members according to their interest, aptitude and capabilities by forming various committees so as to utilize their abilities to the maximum in the progress of the college. Beside various committees, a student union is elected by college students. Representation of student union is important for decision making and strategic planning.

**Appointment, Service Rules and Procedures:**Beside various committees, a student union is elected by college students. Representation of student union is important for decision making.

The selection procedure for Principal and Teaching Staff is as per the rule and regulations of Uttarakhand State and UGC Guidelines. For the Principal/teaching staff /non-teaching staff; service rules and regulations/code of conduct are as per the State Government of Uttarakhand. For the appointment of assistant professor, Uttarakhand Public Service Commission provides advertisement for vacant seats in the Government Colleges of Uttarakhand. The appointment of Principal is done by DPC (Departmental Promotion Committee) as rule and regulation made by State Government of Uttarakhand. The appointment of Clerical staff is done by UKSSSC of Uttarakhand. The appointment of Fourth-Class Employee is done



by UPNL (Uttarakhand Purv Sainik Kaliyan Nigam Limited).

Service Rules for permanent Teaching Faculty	<a href="https://hsbgdcsomeswar.ac.in/wp-content/uploads/2023/01/Niyamawali-2003-Service-Rule.pdf">https://hsbgdcsomeswar.ac.in/wp-content/uploads/2023/01/Niyamawali-2003-Service-Rule.pdf</a>
Service Rules for permanent Non-Teaching Staff	<a href="https://hsbgdcsomeswar.ac.in/wp-content/uploads/2023/01/Class-3-SEVA-NIYMAVALI.pdf">https://hsbgdcsomeswar.ac.in/wp-content/uploads/2023/01/Class-3-SEVA-NIYMAVALI.pdf</a>
Service Rules for Contractual Teachers	<a href="https://hsbgdcsomeswar.ac.in/wp-content/uploads/2023/01/7056-06822920230125141155.pdf">https://hsbgdcsomeswar.ac.in/wp-content/uploads/2023/01/7056-06822920230125141155.pdf</a>

File Description	Document
Provide Link for Additional information	<a href="#">View Document</a>

### 6.2.2 Implementation of e-governance in areas of operation

1. Administration
2. Finance and Accounts
3. Student Admission and Support
4. Examination

**Response:** A. All of the above

File Description	Document
Upload supporting document	<a href="#">View Document</a>

## 6.3 Faculty Empowerment Strategies

### 6.3.1 The institution has effective welfare measures and Performance Appraisal System for teaching and non-teaching staff

**Response:**

For welfare of teaching and non teaching staff the following measures are implemented:

**Leaves:**

All the teaching and non-teaching staff is provided with 14 casual leave yearly.

10 special casual leave provided for attending seminar, conferences etc.

60 days summer and winter vacations for teaching faculties and staff.

Faculties are provided with 1 earn leave yearly whereas non-teaching staff including administrative staff is provided with 30 earn leaves annually.

182 days of maternity leave is entitled for female staff in whole service span.

730 days of child care leave is entitled to female staff for caring their child up to 18 years of age.

15 days of paternity leave is entitled to male staff.

365 days of medical leave is provided to all the employee.

2 years of study leave is provided to all the teaching staff for enhancing their academic performance.

**Pension Contribution:** Permanent staff of the institution is covered under Old pension scheme/ New Pension Scheme. The State Government provides pension scheme to the employee employed before October 2005 and New Pension Scheme (NPS) to the employee employed after October 2005.

Under New pension scheme 10% of basic +DA is contributed by the employee and 14% of Basic+ DA is contributed by state government.

**Health Insurance:** State government also provided medical State Government health scheme (SGHS) facility to all the permanent staff and his/her dependents.

**Gratuity:** All permanent employees are also benefitted by Gratuity.

**HRA:** House rent allowance is given to all permanent employee.

#### **Performane Appraisal System:**

While applying for the senior pay grade under Career Advancement Scheme (CAS) score is claimed by the teachers. Thereafter CAS files along with all the documents are thoroughly examined by IQAC. Duly checked and completed CAS files of faculty members are sent to the Directorate of Higher Education, Uttarakhand for further process. All the ACRs of college have now been digitalized and are available in IFMS portal of state government of Uttarakhand.

**Apparaisal System of teaching Staff:** Under Career Advancement Scheme, a Teaching Staff appraise the following:

1. Upgrade from grade pay 6000 to 7000 after completion of 4 years (For PhD holders) and 6 years (For non PhD Holders)
2. Upgrade from Senior scale (Grade Pay 7000) to Selection grade (Grade pay 8000) after completeion of 5 years.
3. Upgrade from Slection Grade (Grade Pay 8000) to Associate Professor (Grade pay 9000) after completeion of 3 years.

4. Upgrade from Associate Professor (Grade Pay 9000) to Professor (Grade pay 10000) after completion of 3 years.

**Non-Teaching Staff Appraisal:** The College follows the performance appraisal procedures as per Uttarakhand Government norms. There are four cadres, namely, ministerial cadre, personal assistant, ex-cadre and laboratory assistant of Class III (Group C) employees. The promotions in all four cadres are done by directorate. Class IV employees are promoted to Class III on seniority basis after submission of application form, which is scrutinised at the directorate level. 25% of the progression from CLASS IV to CLASS III is on promotional basis and 75% are directly appointed.

File Description	Document
Upload Additional information	<a href="#">View Document</a>
Provide Link for Additional information	<a href="#">View Document</a>

### 6.3.2 Percentage of teachers provided with financial support to attend conferences/workshops and towards membership fee of professional bodies during the last five years

Response: 0

#### 6.3.2.1 Number of teachers provided with financial support to attend conferences/workshops and towards membership fee of professional bodies year wise during the last five years

2021-22	2020-21	2019-20	2018-19	2017-18
0	0	0	0	0

File Description	Document
Institutional data in the prescribed format	<a href="#">View Document</a>

### 6.3.3 Percentage of teaching and non-teaching staff participating in Faculty development Programmes (FDP), professional development /administrative training programs during the last five years

Response: 20.37

#### 6.3.3.1 Total number of teaching and non-teaching staff participating in Faculty development Programmes (FDP), professional development /administrative training programs during the last five years

2021-22	2020-21	2019-20	2018-19	2017-18
9	8	2	1	2

**6.3.3.2 Number of non-teaching staff year wise during the last five years**

2021-22	2020-21	2019-20	2018-19	2017-18
4	4	4	4	2

<b>File Description</b>	<b>Document</b>
Upload supporting document	<a href="#">View Document</a>
Institutional data in the prescribed format	<a href="#">View Document</a>

**6.4 Financial Management and Resource Mobilization**

**6.4.1 Institution has strategies for mobilization and optimal utilization of resources and funds from various sources (government/ nongovernment organizations) and it conducts financial audits regularly (internal and external)**

**Response:**

**Mobilization of Funds**

**1.** Earned income of the institution is from the Fee collected from students in the following heads:

- (i). Tuition Fee
- (ii). Practical fee
- (iii). I card Fee
- (iv). Computer fee
- (v). Facility Maintenance fee
- (vi). College Magazine fee
- (vii). Sports Fee
- (viii). Cultural Activity fee
- (ix). Library fee

**2.** State Government Funds Allocation under following heads:

- (i). Grant-in-aid for salary
- (ii). Infrastructure Maintenance
- (iii). Travelling Allowances
- (iv). Miscellaneous Expanses
- (v). Office expanses
- (vi). Chemical laboratory equipment.

3. RUSA Fund for construction and new facility augmentation.

### **Optimal Utilization of Funds:**

The college utilizes funds for:

1. New Infrastructure Development and Infrastructure Maintenance
2. Salary
3. Procurement and maintenance of Equipment
4. Conducting Seminars, Workshops, Endowment Lectures and intercollegiate events.
5. Student Support (Student Union expanses and Freeships).
6. Conducting Extension Activities
7. Sports Promotion Activities
8. Cultural and Academic Activities
9. Library Expenses
10. Examination Expenses
11. Electricity, Internet bills

Every transaction is supported by the vouchers. All the collections are deposited in the bank and all expenditures (recurring and non-recurring) are incurred through cheques. The Internal accounts are maintained by the office staff. It is looked after by Office Superintendent headed by the principal and proper procedures for purchasing are adopted. Quotations are called for and prices are compared and GEM portal is used for more transparencies. The Institution has formed a Purchase Committee for the purpose. Separate accounts are maintained for all the grants, so as to use the financial resources efficiently and effectively. Departmental Accession Register, Stock Registers/Purchase Registers are physically checked and verified. Whenever a need arises from any department in the college, it is taken to the principal in

writing. The principal may hold a meeting with the IQAC regarding the appropriateness of the presented requirement. After consideration by IQAC and the Principal, a committee is formed for the purchase of the required articles. Either purchasing is done through GEM Portal or quotations from various suppliers are also invited through the office. The principal and the IQAC members observe that all the available resources are utilized to the optimum Level.

An internal audit is conducted every year related to financial disclosure. External audit is conducted by the team appointed by Principal Accountant general (Audit, Utrakhand) for rigorous finance audit. Last external audit of college was done on year 2017.

File Description	Document
Upload Additional information	<a href="#">View Document</a>

## 6.5 Internal Quality Assurance System

**6.5.1 Internal Quality Assurance Cell (IQAC) has contributed significantly for institutionalizing the quality assurance strategies and processes. It reviews teaching learning process, structures & methodologies of operations and learning outcomes at periodic intervals and records the incremental improvement in various activities**

### Response:

Hukum Singh Bora Government Post Graduate college Someshwar committed in its endeavour to improve the quality of the teaching-learning process. The institute has a strategic plan to promote and develop measure for establishing quality improvement practices to advances the overall performance of the college.

The institution through IQAC reviews its teaching learning process, learning outcomes, structures and methodologies of academic operations periodically through Feedback on Teaching-Learning Process, Feedback on Teachers, Feedback analysis on curriculum and Result Analysis.

### 1. Feedback on the Teaching Learning & Evaluation Process

IQAC conducts surveys and feedbacks on teaching learning and evaluation processes as assessment and review tools to maintain quality sustenance. These feedbacks and surveys are collected through online and offline methods, analysed and appropriate measures are taken accordingly.

**Feedback on Teachers:** Teaching methodology and faculty competencies in handling classes are collected from students in online mode every semester. Parents' feedback on teachers and teaching process is collected during general and class PTA meetings. Based on the analysis of feedback on teachers, principal meets teachers individually and takes corrective measures.

**Feedback on Online Teaching:** When the Covid-19 Pandemic disrupted the traditional classroom teaching methods, the college adopted online methods of teaching through online platforms like TCS iON,, Google Classroom etc. Feedback on online teaching were collected from students and which was used to enhance the teaching learning process.

**Feedback from outgoing students** which covers teaching processes, availability of learning resources, effectiveness of evaluation processes and general performance of teachers. The feedback are analysed and discussed in various committees and measures are taken to upgrade the quality of teaching learning and evaluation processes.

**Feedback on Curriculum:** Feedback on curriculum is collected from various stakeholders mainly Students, Teachers and Alumni. The feedback analysis is used to give suggestion to the affiliating university for necessary improvement.

**Result Analysis:** Every semester, results of semestral evaluations are analysed at institutional level with Principal and all HoDs and at departmental level in the department staff meeting. Enhancive measures like remedial coaching and peer teaching is strengthened to improve the pass percentage.

The IQAC has been involved in planning, reviewing, following up and setting up quality indicators and reviewing the procedures occasionally for achieving and maintain quality.

Some of the strategies implemented by the IQAC for institutionally quality reforms include:

- (1) Uses of ICT tools on teaching and learning.
- (2) Digitalization of library.
- (3) Collecting and analyzing of feedback from stakeholders and do necessary improvements.
- (4) Conduct and evaluation of all internal assessment activities and making necessary reforms in Internal Assessments,
- (5) Motivating faculty members to attend Faculty development programs;
- (6) Participation in NIRF Ranking;
- (7) Conduct of co-curricular & extra-curricular activities through committees/cells;
- (8) Promoting online teaching learning
- (9) Infrastructure augmentation in college.
- (10) Adoption of online redressal mechanism.
- (11) Using of GEM portal for procurement.
- (12) Green and energy audit of institute.
- (13) Conduction of weekly webinar series by faculty members in cyclic manner.
- (14) Planning and implementation of academic calendar as per affiliating university norms.

File Description	Document
Upload Additional information	<a href="#">View Document</a>
Provide Link for Additional information	<a href="#">View Document</a>

#### 6.5.2 Quality assurance initiatives of the institution include:

1. Regular meeting of Internal Quality Assurance Cell (IQAC); Feedback collected, analysed and used for improvements
2. Collaborative quality initiatives with other institution(s)/ membership of international networks
3. Participation in NIRF
4. any other quality audit/accreditation recognized by state, national or international agencies such as NAAC, NBA, ISO Certification etc

**Response:** C. Any 2 of the above

File Description	Document
Upload supporting document	<a href="#">View Document</a>
Institutional data in the prescribed format	<a href="#">View Document</a>



## Criterion 7 - Institutional Values and Best Practices

### 7.1 Institutional Values and Social Responsibilities

#### 7.1.1 Measures initiated by the Institution for the promotion of gender equity and Institutional initiatives to celebrate / organize national and international commemorative days, events and festivals during the last five years

##### Response:

College is specially focusing on the providing the special facilities to the women. Girl students and female faculties are safe in the campus. There are no harassment cases recorded in past. There is grievance and disciplinary committee for looking such matters. For safety and security of each individual in our campus, we have strong vigilance system via CCTV Camera. Faculties are always counseling students when they are facing any problems. There is separate committee working in this direction. Special care is giving to the girls students. There are separate common rooms and washrooms for the girls. The counseling services of the student counselor are available to all the students. The services include talking to the students, creating an ambience where the students will develop faith and trust, and will feel free to discuss their problems or issues related to various areas of their life such as family, relationships, peer group pressure, studies which includes time management, concentration, memory, selection of subjects as electives, adjustment and stress management. In sum, the counselor provides a concerned ear to those who want to express their grievances, feelings and emotions with possible solutions. Further, on receiving the complaint, actions are taken as per UGC norms.

For extracurricular activities, the girl students are provided with the following facility –

- 1 Treadmill for Girls separately
- 1 Table tennis Room
- 1 Room for indoor games like Chess and Carom Board etc., each for Girls and Boys separately
- 1 Badminton Courts
- 1 girls common room and seperate washrooms for Girls.
- Medical facilities
- CCTV camera for surveillance

The college also has a detailed policy on prohibition of discrimination and sexual harassment and available at college website: <https://hsbgdcsomeshwar.ac.in/policy-of-prohibiting-discrimination/>

Besides National Festivals, college celebrates/ organizes various national/ international commemorative days, some of those are as follows:

- International Woman Day
- International Science Day
- International Mathematics Day
- Environment day
- Himalaya Diwas
- Harela festival
- Hindi Diwas
- International Matribhasha Diwas

- Constitution day
- Yoga Day
- Voters Day
- Aazadi ka Amrit Mahotsava etc.

<b>File Description</b>	<b>Document</b>
Upload Additional information	<a href="#">View Document</a>
Provide Link for Additional information	<a href="#">View Document</a>

**7.1.2 The Institution has facilities and initiatives for**

1. Alternate sources of energy and energy conservation measures
2. Management of the various types of degradable and nondegradable waste
3. Water conservation
4. Green campus initiatives
5. Disabled-friendly, barrier free environment

**Response:** A. 4 or All of the above

<b>File Description</b>	<b>Document</b>
Upload supporting document	<a href="#">View Document</a>

**7.1.3 Quality audits on environment and energy regularly undertaken by the Institution. The institutional environment and energy initiatives are confirmed through the following**

1. Green audit / Environment audit
2. Energy audit
3. Clean and green campus initiatives
4. Beyond the campus environmental promotion activities

**Response:** D. Any 1 of the above

<b>File Description</b>	<b>Document</b>
Upload supporting document	<a href="#">View Document</a>

**7.1.4 Describe the Institutional efforts/initiatives in providing an inclusive environment i.e., tolerance and harmony towards cultural, regional, linguistic, communal socioeconomic diversity and Sensitization of students and employees to the constitutional obligations: values, rights, duties and responsibilities of citizens (Within 500 words)**

**Response:**

Most of the students taking admissions in the college are from local area and community. Enough care is taken for specific earmarked seats of each category are filled up. The statutory committees of the college are well balanced with the representation of each category. In major extension activities local citizen's participation is commendable. The college fosters community responsibility by organizing blood donation camps routinely.

The college is playing an effective role of catalyst in the town to maintain the peace and national integration. The college regularly organizes different activities for inculcating the values of tolerance, harmony towards cultural diversities. Our college belongs to the rural background. Its activities have a very positive impact on the society's cultural & communal thoughts directly

The college renders national service by organizing **road-safety awareness programs** routinely through NSS cell.

To promote a sustainable environment, **Swachh Bharat campaigns** and **Tree Plantation** drives are organized.

Awareness programs for proper **E-waste disposal** are organized.

The college promotes linguistic diversity and cultural plurality by organizing programs such as cultural programs, **Hindi Diwas, Uttarakhand Sthapana Diwas, International Matribhasha Diwas.**

College celebrates **Environment week** for better understanding of environmental issues.

The college enshrines the sovereign and democratic values of our nation by commemorating the Independence Day and the Republic Day annually. Constitution Day is celebrated every year in the college.

**Voter's Day and Voter's Awareness Programs** are organized in the college to create awareness of youth towards their constitutional rights and duties. Routine drives are organized to facilitate issuance of voter ID for students.

Institute provides an inclusive environment for everyone with tolerance and harmony towards cultural, regional, linguistic, communal socioeconomic and other diversities. The college and its teacher and staff jointly celebrate the cultural and regional festivals, like Harela, Fresher Party, Teacher's day, Orientation and Farewell program, Induction program, Rally, oath, plantation, Youth day, Women's day, Yoga day, Holi Milan celebration, New Year celebration etc. religious ritual activities are performed in the campus. These functions help in developing tolerance harmony towards culture, region and linguistics and also communal social economics and other diversities. Two important national festivals, Republic Day and Independent Day are celebrated every year in our College Campus. All teaching, non teaching staff and students participate for the cause of nation.

As per centre government initiative, college is registered for "**Ek Bhart Shresth Bharat Abhiyan**" to make familiar the students about Diversity in Indian culture.

College regularly invite Legal advisors to familiar students about their fundamental rights and duties for nation.

**Constitution Day "National Law Day"**, is celebrated every year on 26 November in the campus to aware the students about fundamental rights, responsibilities and duties.

File Description	Document
Upload Additional information	<a href="#">View Document</a>

## 7.2 Best Practices

### 7.2.1 Describe two best practices successfully implemented by the Institution as per NAAC format provided in the Manual

#### Response:

#### Best Practice 1

#### Title of the Practice: Digital awareness through QR codes

#### Objectives of the Practice:

- To eliminate problem of remembering long web addresses.
- To speed up the login process to various web based services.
- To make the learning process interesting and interactive.
- To provide easy and quick access to study material and online resources.
- To provide in-depth information about biological specimens and plants in the property.
- To quickly facilitate and fulfill the academic needs/requirements of library users in a remote area.
- To speed up the processes like, admission, lodging grievance, and library services.
- Providing selective and filtered information to students.

#### The Context:

Technology is essential to education. Today's students take screenshots and photos instead of writing everything down in a notebook. Also, they share PDF notes and electronic books. Education institutions can improve student learning by making it more immersive and engaging with the use of technology. And this is when QR codes come into play. We may share digital learning materials and information with a wide audience by using QR codes. This includes websites, photos, videos, PDFs, and other formats. QR codes make administrative procedures like admissions and identification more efficient. It makes learners' experience participatory but also aids in the improvement of the students' conceptual understanding. Technology is used to increase accessibility, immersion, and interaction in learning. QR codes are fast and easy to use.

#### The Practice:

As majority of students are mobile savvy, the college has broadly adopted the practice of using QR codes in various activities. Our library uses QR codes extensively and is committed to provide optimum and finest information and reading material to our students. We have a separate wall dedicated to QR codes in

library. Every library shelf holds QR code of particular syllabus. The library staff easily rearranges the books on specified shelves by using QR codes. QR codes are imprinted on Identity cards of staff members scanning which leads to their profiles for authentication. Numerous specimens can be found in biology labs, and students are often curious to learn more about them. To make the learning process for students as easy as possible, we have utilised QR codes to provide comprehensive information about biological specimens, in our Botany and Zoology labs. Apart from this we have pasted QR codes in our college's gardens, there students can simply scan and get additional information about various plants and trees. Students and teachers don't have to remember long web addresses anymore. QR codes are installed at various spots in the college premises to offer them different services, convey information and instructions.

### **Evidence of Success:**

Use of QR codes has made various tedious procedures easy and accessible for both students and teachers. College faculty members have begun to prepare PDF notes and distribute their QR codes to students in place of handing out paper notes. The use of QR codes has made it easier to manage library, and through these students are exposed to a vast sea of knowledge, which is just a click away. Besides its utility the scanning process is an exciting activity among students hence, is very popular, so it has increased students' involvement.

### **Problems Encountered and Resources Required:**

It was initially challenging to effectively instruct students on using QR codes, given that they lacked QR scanners. The state government initiated a programme last year that gave all students smart gadgets that enabled them to scan.

Initially, internet access on campus was not very good, but today it is a fully WiFi campus, with 5 Modems and 3 Optical Fiber Cable connections.

## **Best Practice 2**

### **Title of the Practice: Promotion of Environment Sustainability**

#### **Objectives of the Practice:**

- To promote Sustainable living practices.
- Supporting local economies, as college's social responsibility.
- Implementing Eco-friendly initiatives.
- To promote green and environment friendly practices in the campus.
- Developing campus gardens.
- Rain water harvesting.
- Sensitising about Climate change.
- Proper segregation and disposal of waste.
- Energy Conservation.
- Stopping use of disposable items.
- Going Digital.
- Generating awareness for waste management.

- Protect Flora and Fauna.

### **The Context:**

College is adopting more and more sustainable practices. The majority of solutions entail a straightforward change between two products, such as going from a disposable water bottle to a reusable one. Others may require more work, such as founding and running a campus garden. The ability to satisfy our immediate wants without sacrificing the potential of future generations to satisfy theirs is sustainability. It pertains to social, economic, and natural resources. Contrary to popular belief, environmental activism is not the only aspect of sustainability. Economic growth and social equity are additional issues. It is a collective perspective and collective behaviours.

### **The Practice:**

The following measures have been taken:

- Organised several awareness campaigns with the help of Eco club.
- Conducted various competitions in regularly.
- There is ample natural light in every classroom because of careful design, to avoid need of turning on lights.
- Solar street lights are installed.
- Maintained college gardens.
- Rain water harvesting systems are constructed.
- Ground water recharge zone is built.
- College is plastic free Campus.
- College has developed proper waste management systems.
- College has been celebrating days of environmental significance like Himalaya Diwas etc.

### **Evidence of Success:**

College has successfully formed the Swachhta Action Plan Committee. Institution is now recognised as Swachhta Action Plan Institution by Government of India. College successfully conducted Green Energy Audit. Rain water harvesting systems are working suitably. Entire college is a green campus with lush gardens and abundant biodiversity. There is a clear sign of increased awareness among students and they have started to make sustainable choices.

### **Problems Encountered and Resources Required:**

There are certain difficulties and challenges in adopting sustainable practices such as, inadequate infrastructure, money, technology, or human resources, shortage of infrastructure, or renewable energy systems. As majority of students come from poor economic background, sometimes it is challenging to embrace sustainable practices. Despite these obstacles and limited resources, there are numerous encouraging changes taking place, and more and more people are realising the importance of making the transition to a more sustainable future.

File Description	Document
Any other relevant information	<a href="#">View Document</a>
Best practices as hosted on the Institutional website	<a href="#">View Document</a>

## 7.3 Institutional Distinctiveness

### 7.3.1 Portray the performance of the Institution in one area distinctive to its priority and thrust within 1000 words

#### Response:

**1:** About seventy five percent of the total students enrolled are female. A large number of female enrollments is a distinctive feature of college. The Minister of Women and Child Welfare, Uttarakhand Mrs. Rekha Arya hales from Someshwar, which is a matter of pride and inspiration not only for female students of college but also entire population of Someshwar. Someshwar is also known as ‘bowl of rice’ due to its fertile agricultural land in which huge quantity of rice is produced. Due to which girls also have to fulfill the responsibility of agricultural as well as all sort of household activities. The college is committed to work in the direction of women empowerment. There is a saying, “if a man is educated an individual is educated, if a women is educated a family is educated”. If females stand on their own feet they will be able to lead a self-empowered life and play a significant role in empowering their family as well as society. To provide opportunities for holistic development of girls a number of initiatives have been introduced by the college. Women are provided a large range of activities to empower them in all the aspects of life. To help girls realize their potential and opportunities available to them a range of activities are conducted by the college.

*‘Mahila Utpidan Niwaran Prokosht’* of college has been working in the direction of creating awareness among women about their rights. Numerous programs have been conducted in online as well as offline mode, which include lectures by Police Personal on various issues related to women and acts related to Protection of women like Protection of Women from Domestic Violence Act 2005, Dowry Prohibition Act 1961, and One-Stop Center Sakhi Yojana. For example one such program was organized in the Chairmanship of Principal Dr. Y. K. Sharma in which Mr. Pankaj Bhatt, S.S.P. Almora presented a lecture on Prevention, Prohibition and Redressal of Women Harassment. The female students were provided women helpline number 1091 and Whatsapp Helpline No. 9411112780 so that they could seek immediate help if required. Information regarding 354A, 354B, 354C, 354D Acts of Indian Penal Code was also provided to girls. In another awareness program girls were introduced about ‘Gaura Shakti App’ and it has been installed in the mobile of every girl in college.

During Covid period when all the schools and colleges were closed, the college took an initiative to know the problems of girls and guide them accordingly. It was decided that on the last Saturday of every month a female faculty member would interact with the girls of the college through the online platform of Google Meet. As girls also have to work as a helping hand with their parents in the agricultural work and other household chores, so that girls are not driven away from their studies the above mentioned guidance program was conducted. In one of the programs, an online interactive session was organised by Dr. Bhawana on the topic ‘Gender Inequality’ in which problems faced by girls due to gender discrimination were discussed and remedial measures were suggested to the students.

By the motivation of *Mahila Utpeedan Niwarn Prakoshth*, some girls of the college are playing an active social role by teaching children of rural areas around their locality free of cost. As the parents are educationally backward they are unable to guide their children at home and children have to travel a long distance to reach the market area for taking tuition classes. So, the role played by the girls of the college becomes more significant in this case. It is a matter of Pride that a female faculty Dr. Bhawna (Dept. of Hindi) has been awarded with following prestigious awards:

1. “Bhartendu harishchandra Rashtrabhasha hindi gaurav Samman 2022”
2. “Geena Devi Rashtra Gaurav Samman”

**2:** Hukum Singh Bora Government Post Graduate College, Someshwar is using water supply from natural resources. Thus, the college is fully self-reliant and is not dependent on water supply by municipality / Jal Sansthan. Average water usage of college is about 500L per day. We believe that sharing of resources extends a sense of friendliness among institutions, and encourages sustainable practices at large. Keeping that viewpoint in mind, college is not only tapping the water from natural resource, but also distributing it by providing surplus water to other institutions, nearby. Hence, to facilitate other institutions, the college has built one additional water tank with the capacity of 10,000L. It is a matter of great pleasure for us, as sharing of natural resources is one of our core institutional values too.

File Description	Document
Appropriate web in the Institutional website	<a href="#">View Document</a>



## 5. CONCLUSION

---

### **Additional Information :**

Hukum Singh Bora Government Post Graduate College, Someshwar is dedicated to provide quality education to the students. From session 2022-23, New education Policy -2020 has been implemented and a new Post Graduate Program MA (English) is introduced. Recently three new subjects (Psychology, Sanskrit and Home Science) are approved by state government for Undergraduate Program (BA) and the same courses will be offered to students from session 2023-24. Construction of a girl's hostel is proposed in college campus, whose DPR is already submitted.

### **Concluding Remarks :**

Hukum Singh Bora Government Post Graduate College, Someshwar, has been at the service in grooming generations through quality education and value-based formation. The college endeavours to inline its vision of imparting transformative education for the empowerment of every section and promotion of a more just and humane society. The college stands with its vast infrastructure spreading over more than 3.8 acres with full of biodiversity. The recent additions in its ICT facilities and green initiatives have increased its attraction.



## 6.ANNEXURE

### 1.Metrics Level Deviations

Metric ID	Sub Questions and Answers before and after DVV Verification																																								
1.2.1	<p><b>Number of Add on /Certificate/Value added programs offered during the last five years</b></p> <p>Answer before DVV Verification : 2 Answer After DVV Verification : 1</p>																																								
1.4.1	<p><b>Institution obtains feedback on the academic performance and ambience of the institution from various stakeholders, such as Students, Teachers, Employers, Alumni etc. and action taken report on the feedback is made available on institutional website (Yes or No)</b></p> <p>Answer before DVV Verification : Yes Answer After DVV Verification: Yes</p>																																								
2.1.2	<p><b>Percentage of seats filled against seats reserved for various categories (SC, ST, OBC, Divyangjan, etc. as per applicable reservation policy) during the last five years (Exclusive of supernumerary seats)</b></p> <p>2.1.2.1. <i>Number of actual students admitted from the reserved categories year - wise during the last five years</i></p> <p>Answer before DVV Verification:</p> <table border="1"> <thead> <tr> <th>2021-22</th> <th>2020-21</th> <th>2019-20</th> <th>2018-19</th> <th>2017-18</th> </tr> </thead> <tbody> <tr> <td>80</td> <td>63</td> <td>68</td> <td>60</td> <td>74</td> </tr> </tbody> </table> <p>Answer After DVV Verification :</p> <table border="1"> <thead> <tr> <th>2021-22</th> <th>2020-21</th> <th>2019-20</th> <th>2018-19</th> <th>2017-18</th> </tr> </thead> <tbody> <tr> <td>69</td> <td>63</td> <td>63</td> <td>70</td> <td>64</td> </tr> </tbody> </table> <p>2.1.2.2. <b>Number of seats earmarked for reserved category as per GOI/ State Govt rule year wise during the last five years</b></p> <p>Answer before DVV Verification:</p> <table border="1"> <thead> <tr> <th>2021-22</th> <th>2020-21</th> <th>2019-20</th> <th>2018-19</th> <th>2017-18</th> </tr> </thead> <tbody> <tr> <td>162</td> <td>162</td> <td>162</td> <td>162</td> <td>132</td> </tr> </tbody> </table> <p>Answer After DVV Verification :</p> <table border="1"> <thead> <tr> <th>2021-22</th> <th>2020-21</th> <th>2019-20</th> <th>2018-19</th> <th>2017-18</th> </tr> </thead> <tbody> <tr> <td>162</td> <td>162</td> <td>162</td> <td>162</td> <td>132</td> </tr> </tbody> </table> <p>Remark : Values have been updated as per attachment and data in related metrics</p>	2021-22	2020-21	2019-20	2018-19	2017-18	80	63	68	60	74	2021-22	2020-21	2019-20	2018-19	2017-18	69	63	63	70	64	2021-22	2020-21	2019-20	2018-19	2017-18	162	162	162	162	132	2021-22	2020-21	2019-20	2018-19	2017-18	162	162	162	162	132
2021-22	2020-21	2019-20	2018-19	2017-18																																					
80	63	68	60	74																																					
2021-22	2020-21	2019-20	2018-19	2017-18																																					
69	63	63	70	64																																					
2021-22	2020-21	2019-20	2018-19	2017-18																																					
162	162	162	162	132																																					
2021-22	2020-21	2019-20	2018-19	2017-18																																					
162	162	162	162	132																																					
2.4.2	<p><b>Percentage of full time teachers with NET/SET/SLET/ Ph. D. / D.M. / M.Ch. / D.N.B Superspeciality / D.Sc. / D.Litt. during the last five years (consider only highest degree for count)</b></p>																																								

**2.4.2.1. Number of full time teachers with NET/SET/SLET/Ph. D. / D.M. / M.Ch. / D.N.B Superspeciality / D.Sc. / D.Litt. year wise during the last five years**

Answer before DVV Verification:

2021-22	2020-21	2019-20	2018-19	2017-18
21	19	19	17	14

Answer After DVV Verification :

2021-22	2020-21	2019-20	2018-19	2017-18
20	17	8	4	2

Remark : Values have been updated as per attachment

**3.2.2 Number of workshops/seminars/conferences including on Research Methodology, Intellectual Property Rights (IPR) and entrepreneurship conducted during the last five years**

**3.2.2.1. Total number of workshops/seminars/conferences including programs conducted on Research Methodology, Intellectual Property Rights (IPR) and entrepreneurship year wise during last five years**

Answer before DVV Verification:

2021-22	2020-21	2019-20	2018-19	2017-18
13	6	0	0	0

Answer After DVV Verification :

2021-22	2020-21	2019-20	2018-19	2017-18
2	0	0	0	0

**3.3.1 Number of research papers published per teacher in the Journals notified on UGC care list during the last five years**

**3.3.1.1. Number of research papers in the Journals notified on UGC CARE list year wise during the last five years**

Answer before DVV Verification:

2021-22	2020-21	2019-20	2018-19	2017-18
16	10	3	3	5

Answer After DVV Verification :

2021-22	2020-21	2019-20	2018-19	2017-18
4	6	0	2	2

**3.3.2 Number of books and chapters in edited volumes/books published and papers published in**

**national/ international conference proceedings per teacher during last five years****3.3.2.1. Total number of books and chapters in edited volumes/books published and papers in national/ international conference proceedings year wise during last five years**

Answer before DVV Verification:

2021-22	2020-21	2019-20	2018-19	2017-18
7	3	0	1	0

Answer After DVV Verification :

2021-22	2020-21	2019-20	2018-19	2017-18
7	3	0	1	0

3.4.3

**Number of extension and outreach programs conducted by the institution through NSS/NCC/Red cross/YRC etc., (including the programmes such as Swachh Bharat, AIDS awareness, Gender issues etc. and/or those organised in collaboration with industry, community and NGOs) during the last five years****3.4.3.1. Number of extension and outreach Programs conducted in collaboration with industry, community, and Non- Government Organizations through NSS/ NCC/ Red Cross/ YRC etc., year wise during the last five years**

Answer before DVV Verification:

2021-22	2020-21	2019-20	2018-19	2017-18
13	9	5	2	2

Answer After DVV Verification :

2021-22	2020-21	2019-20	2018-19	2017-18
10	6	3	2	2

4.1.2

**Percentage of expenditure, excluding salary for infrastructure augmentation during last five years (INR in Lakhs)****4.1.2.1. Expenditure for infrastructure augmentation, excluding salary during the last five years (INR in lakhs)**

Answer before DVV Verification:

2021-22	2020-21	2019-20	2018-19	2017-18
13.09516	54.67170	4.785	13.86689	0.20

Answer After DVV Verification :

2021-22	2020-21	2019-20	2018-19	2017-18
13.09516	54.67171	4.785	13.86689	0.20

4.4.1	<p><b>Percentage of expenditure incurred on maintenance of infrastructure (physical and academic support facilities) excluding salary component during the last five years (INR in Lakhs)</b></p> <p>4.4.1.1. <b>Expenditure incurred on maintenance of infrastructure (physical facilities and academic support facilities) excluding salary component year wise during the last five years (INR in lakhs)</b></p> <p>Answer before DVV Verification:</p> <table border="1" data-bbox="306 472 1046 604"> <thead> <tr> <th>2021-22</th> <th>2020-21</th> <th>2019-20</th> <th>2018-19</th> <th>2017-18</th> </tr> </thead> <tbody> <tr> <td>1.93418</td> <td>1.38824</td> <td>1.18965</td> <td>1.43575</td> <td>1.28754</td> </tr> </tbody> </table> <p>Answer After DVV Verification :</p> <table border="1" data-bbox="306 683 1046 815"> <thead> <tr> <th>2021-22</th> <th>2020-21</th> <th>2019-20</th> <th>2018-19</th> <th>2017-18</th> </tr> </thead> <tbody> <tr> <td>1.93417</td> <td>1.38824</td> <td>1.18965</td> <td>1.43575</td> <td>1.28754</td> </tr> </tbody> </table>	2021-22	2020-21	2019-20	2018-19	2017-18	1.93418	1.38824	1.18965	1.43575	1.28754	2021-22	2020-21	2019-20	2018-19	2017-18	1.93417	1.38824	1.18965	1.43575	1.28754
2021-22	2020-21	2019-20	2018-19	2017-18																	
1.93418	1.38824	1.18965	1.43575	1.28754																	
2021-22	2020-21	2019-20	2018-19	2017-18																	
1.93417	1.38824	1.18965	1.43575	1.28754																	
5.1.2	<p><b>Capacity building and skills enhancement initiatives taken by the institution include the following</b></p> <ol style="list-style-type: none"> <li>1. <i>Soft skills</i></li> <li>2. <i>Language and communication skills</i></li> <li>3. <i>Life skills (Yoga, physical fitness, health and hygiene)</i></li> <li>4. <i>ICT/computing skills</i></li> </ol> <p>Answer before DVV Verification : A. All of the above Answer After DVV Verification: C. 2 of the above</p>																				
5.1.3	<p><b>Percentage of students benefitted by guidance for competitive examinations and career counseling offered by the Institution during the last five years</b></p> <p>5.1.3.1. <b>Number of students benefitted by guidance for competitive examinations and career counselling offered by the institution year wise during last five years</b></p> <p>Answer before DVV Verification:</p> <table border="1" data-bbox="306 1456 1046 1588"> <thead> <tr> <th>2021-22</th> <th>2020-21</th> <th>2019-20</th> <th>2018-19</th> <th>2017-18</th> </tr> </thead> <tbody> <tr> <td>784</td> <td>165</td> <td>85</td> <td>521</td> <td>167</td> </tr> </tbody> </table> <p>Answer After DVV Verification :</p> <table border="1" data-bbox="306 1666 1046 1798"> <thead> <tr> <th>2021-22</th> <th>2020-21</th> <th>2019-20</th> <th>2018-19</th> <th>2017-18</th> </tr> </thead> <tbody> <tr> <td>132</td> <td>121</td> <td>85</td> <td>105</td> <td>124</td> </tr> </tbody> </table>	2021-22	2020-21	2019-20	2018-19	2017-18	784	165	85	521	167	2021-22	2020-21	2019-20	2018-19	2017-18	132	121	85	105	124
2021-22	2020-21	2019-20	2018-19	2017-18																	
784	165	85	521	167																	
2021-22	2020-21	2019-20	2018-19	2017-18																	
132	121	85	105	124																	
5.1.4	<p><b>The Institution has a transparent mechanism for timely redressal of student grievances including sexual harassment and ragging cases</b></p> <ol style="list-style-type: none"> <li>1. <b>Implementation of guidelines of statutory/regulatory bodies</b></li> <li>2. <b>Organisation wide awareness and undertakings on policies with zero tolerance</b></li> <li>3. <b>Mechanisms for submission of online/offline students' grievances</b></li> </ol>																				

**4. Timely redressal of the grievances through appropriate committees**

Answer before DVV Verification : A. All of the above

Answer After DVV Verification: A. All of the above

**5.3.1 Number of awards/medals for outstanding performance in sports/ cultural activities at University / state/ national / international level (award for a team event should be counted as one) during the last five years****5.3.1.1. Number of awards/medals for outstanding performance in sports/cultural activities at national/international level (award for a team event should be counted as one) year wise during the last five years**

Answer before DVV Verification:

2021-22	2020-21	2019-20	2018-19	2017-18
6	0	1	2	1

Answer After DVV Verification :

2021-22	2020-21	2019-20	2018-19	2017-18
0	2	0	0	2

Remark : Values have been updated as per attachment considering relevant awards

**5.3.2 Average number of sports and cultural programs in which students of the Institution participated during last five years (organised by the institution/other institutions)****5.3.2.1. Number of sports and cultural programs in which students of the Institution participated year wise during last five years**

Answer before DVV Verification:

2021-22	2020-21	2019-20	2018-19	2017-18
16	4	9	9	11

Answer After DVV Verification :

2021-22	2020-21	2019-20	2018-19	2017-18
6	0	5	5	8

Remark : Values have been updated as per attachment considering relevant entries

**6.3.3 Percentage of teaching and non-teaching staff participating in Faculty development Programmes (FDP), professional development /administrative training programs during the last five years****6.3.3.1. Total number of teaching and non-teaching staff participating in Faculty development Programmes (FDP), professional development /administrative training programs during the last five years**

Answer before DVV Verification:

2021-22	2020-21	2019-20	2018-19	2017-18
9	13	4	1	2

Answer After DVV Verification :

2021-22	2020-21	2019-20	2018-19	2017-18
9	8	2	1	2

**6.3.3.2. Number of non-teaching staff year wise during the last five years**

Answer before DVV Verification:

2021-22	2020-21	2019-20	2018-19	2017-18

6.5.2

**Quality assurance initiatives of the institution include:**

1. **Regular meeting of Internal Quality Assurance Cell (IQAC); Feedback collected, analysed and used for improvements**
2. **Collaborative quality initiatives with other institution(s)/ membership of international networks**
3. **Participation in NIRF**
4. **any other quality audit/accreditation recognized by state, national or international agencies such as NAAC, NBA, ISO Certification etc**

Answer before DVV Verification : C. Any 2 of the above

Answer After DVV Verification: C. Any 2 of the above

7.1.3

**Quality audits on environment and energy regularly undertaken by the Institution. The institutional environment and energy initiatives are confirmed through the following**

1. **Green audit / Environment audit**
2. **Energy audit**
3. **Clean and green campus initiatives**
4. **Beyond the campus environmental promotion activities**

Answer before DVV Verification : A. All of the above

Answer After DVV Verification: D. Any 1 of the above

## 2.Extended Profile Deviations

ID	Extended Questions										
1.1	<p><b>Number of teaching staff / full time teachers during the last five years (Without repeat count):</b></p> <p>Answer before DVV Verification : 43</p> <p>Answer after DVV Verification : 43</p>										
2.1	<p><b>Expenditure excluding salary component year wise during the last five years (INR in lakhs)</b></p> <p>Answer before DVV Verification:</p> <table border="1"> <thead> <tr> <th>2021-22</th> <th>2020-21</th> <th>2019-20</th> <th>2018-19</th> <th>2017-18</th> </tr> </thead> <tbody> <tr> <td></td> <td></td> <td></td> <td></td> <td></td> </tr> </tbody> </table>	2021-22	2020-21	2019-20	2018-19	2017-18					
2021-22	2020-21	2019-20	2018-19	2017-18							

1.48754	15.26264	5.97465	56.05994	15.02934
---------	----------	---------	----------	----------

Answer After DVV Verification:

2021-22	2020-21	2019-20	2018-19	2017-18
15.03	56.10	5.98	15.31	1.49